

GERMAN TUNING AMERICAN PRIDE

> ABD Racing > ABD Racing > ABD Racing > ABD Racing > ABD Racing > ABD Racing > ABD Racing > ABD Racing > ABD Racing >



< ABD Racing < ABD Racing < ABD Racing < ABD Racing < ABD Racing < ABD Racing < ABD Racing < ABD Racing < ABD Racing <



Power, Performance, and Quality... These were the driving forces behind Dave Anderson when he created Autobahn Designs in 1990, to serve the needs of high performance German car fans everywhere. This desire to provide quality performance parts led to the creation of the Autobahn Designs line of tuning accessories, called ABD Racing parts. The ABD Racing line has grown over the years to cover every chassis, from suspension modifications to performance products, as well as aerodynamic enhancements. Autobahn Designs has strived to make ABD Racing components, the tuner products of choice for the discriminating customer. Today, the ABD Racing line is stronger than ever, and with new innovations, the product line will continue to grow.

In 2002 Autobahn Designs expanded to fill the needs of Mini Cooper enthusiast by forming a new division called ABD Mini. This segment of Autobahn Designs came about after another expansion occurred within the company. The established staff of full time employees increased by one when Jason Reich joined the company in 2002 with the goal of extending the reach of Autobahn Designs. The first step towards reaching this goal was the creation of Monster Mini. New Mini enthusiasts are now able get quality products to tune their cars for a respected tuning house. In the future, Monster Mini will be developing and producing some very innovative products for Mini tuning.



The newest addition to the Autobahn Designs tuning family is actually the oldest segment of the business. Autobahn Designs has been tuning highline cars like Mercedes and BMW since the day we opened our doors, but until now, it has been an unpublicized segment of our business. Over the years our knowledge of these upper division cars has expanded to the point where we are now offering this tuning to our most particular customers. Autobahn Designs is now proud to publicly announce the formation of Autobahn Designs Highline. Our years of knowledge and experience are now available for owners of European high performance and luxury cars and SUV's. Custom and complete vehicle tuning is our specialty.

The future of Autobahn Designs is very promising. Expansion into other fields of vehicle tuning will not only guarantee customers, parts that really perform, but it will give knowledge to our sales staff, to better assist you and your performance needs. Total vehicle tuning is our specialty, and you can count on our service to make your experience with us, the best you have ever had. Thank you for choosing Autobahn Designs!

President
Dave Anderson

CEO
Jason Reich

**Some parts advertised may not be legal for use on public roads.*





ABD Racing Front Mount Intercooler Kits

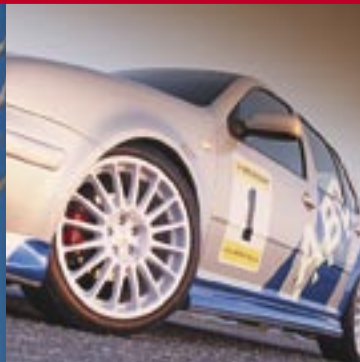
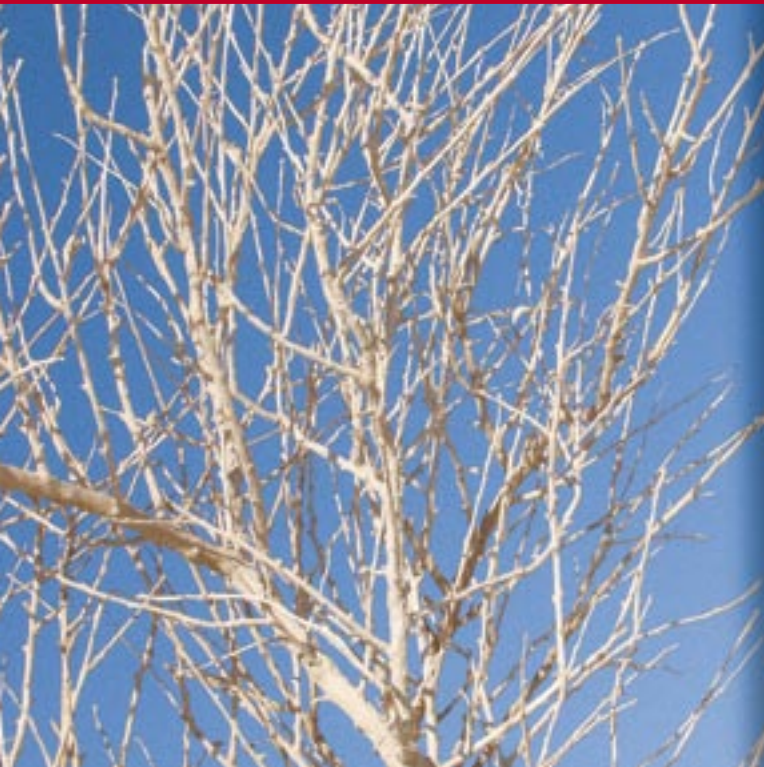
A must for all 1.8T powered vehicles!

ABD Racing is proud to have been the first to offer a complete easy to install front mount intercooler conversion for 1.8T-powered vehicles.

and no modifications to any sheet metal or bumper reinforcement. Independent dyno studies have shown gains of 9hp with over 30% less intake heat. The actual horsepower gains can be much higher as the engine heat alone can rob over 15hp. The complete kit includes all

Application	Part Number
Beetle 1.8T	70.INT.92
Golf / Jetta 1.8T	70.INT.90
Golf / Jetta 2.0T (2005-up)	70.INT.95
Passat 2.0l Fsi (2006-up)	70.INT.96
Passat 1.8T	70.INT.91
Audi A4 (1996-2001)	70.INT.93
Audi A4 (2002-up)	70.INT.94

*Some parts advertised may not be legal for use on public roads.



Nitrous Express Halo Kit

This complete package will force cold nitrous or CO2 onto the surface of the intercooler. By doing so intake temperatures are reduced dramatically.

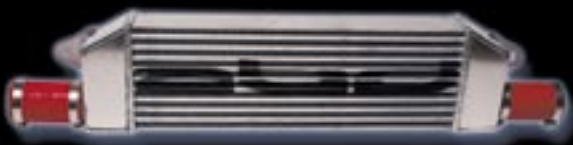
Application	Part Number
ABD Racing front mount intercooler	20000-5



ABD Racing Intercooler only

If you have a custom application or need a replacement this is the same part included in the above-described package. This is the intercooler only – Not a kit.

Description	Part Number
ABD Racing intercooler	70.INT.CORE



ABD Racing 1.8T Lower Intercooler Tube

A nice addition for your MKIV Golf / Jetta / Beetle 1.8T is the ABD Racing lower intercooler tube. Our unit replaces the factory restrictive part with a mandrel bent 57mm aluminum tubing. The ABD Racing lower intercooler tube installs in minutes as all attachment points are in the original location. Aluminum brilliant silver to keep intake temperatures cooler.

Application	Part Number
Beetle 1.8T (1999-up)	70.INT2
Golf / Jetta MKIV 1.8T (1999-2001)	70.INT1
Golf / Jetta MKIV 1.8T (2002-up)	70.INT3



*Some parts advertised may not be legal for use on public roads.

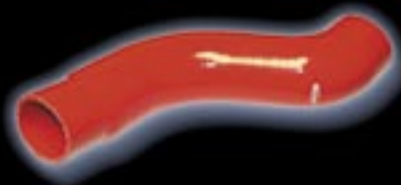
ABD Racing Silicone Intake Hose

This durable pure silicone hose replaces the original rubber connector from the throttle body to intercooler. Larger diameter and less restrictive than original equipment.

Application	Part Number
Golf / Jetta 1.8T	70.INT.6.2

ABD 1.8T Red Silicone
3pc Radiator Hose Kit

70.INT.7



ABD Racing Big Bore® Turbo Inlet Tube

ABD Racing is proud to have been the first to introduce a genuine bolt on performance part for the Golf / Jetta & Beetle 1.8T. Our Big Bore turbo intake tube increases the diameter to a great 57mm! Made from billet aluminum, this part looks as great as it performs. Expect noticeable gains above 3,000 rpm with hp rating increased to 8 hp (ratings from a k-04 equipped vehicle). Bolts on in 30 minutes, this is the best bang for the buck in 1.8T performance.

Application	Part Number
Beetle / Golf / Jetta 1.8T (1999-2000) 44mm intake	70.INT5.1
Beetle / Golf / Jetta 1.8T (2001-up) 45mm intake	70.INT5.2
Manual transmission only	
Golf / Jetta / Passat / Audi A3 2.0 Fsi (outlet)	70.INT5.3

*NOTE - K04 Turbochargers are a 44mm intake.



ABD Racing 1.8t Intake Manifold*

ABD Racing is proud to be the first to produce a high performance replacement intake manifold of your 1.8t vehicle. Manufactured from T6 aluminum cast this manifold has shown gains from 12-20 hp and increases of 14-22 ft.lbs of torque. This easy to install intake manifold will improve power on both stock and highly modified engines.

Application: 1.8t Golf / Jetta	Satin Finish	Polished Finish	Ceramic Coated
Part Number	70.INTM.1	70.INTM.1P	70.INTM.1C
Extruded (ported) add \$ 395.00			



*Some parts advertised may not be legal for use on public roads.



ABD Racing's R32 received a sudden boost in horsepower. With the completion of the VF Engineering supercharger package the horsepower gain was awesome. An independent dyno pull recorded horsepower gains of 75.8 at the wheels!

We offer a full selection bolt on supercharger kits for most late model vehicles. Contact us for a complete listing of applications.

Supercharger System*

- VR6 Golf III/Jetta III/ Passat (250hp)
- VR6 Golf IV/Jetta IV 12v (250hp)
- VR6 Golf IV/Jetta IV 24v (280hp)
- R32 Golf (320hp)
- Corrado VR6 (250 HP)
- Corrado VR6 (280 HP)
- Golf/ Jetta MKIII/ Passat VR6 (1993-99)(280hp)
- Golf/ Jetta MKIV 12V VR6 (1999-01) (280 HP)
- Golf/ Jetta MKIV 12V VR6 (1999-01) (305 HP)
- Golf/ Jetta MKIV 24V VR6 (2002-05)(est305hp)
- R32 GTI VR6 (350 HP)
- R32 GTI VR6
- Touareg V6 (310 HP)

- Stage One kit
- Stage Two upgrade
- Stage Two upgrade
- Stage two upgrade
- Stage three upgrade
- Stage Two upgrade
- Stage two upgrade
- Stage three upgrade
- Stage one kit

- VFK01-01
- VFK03-01
- VFK04-01
- VFK0X-01
- VFK02.01
- VFK02.02
- VFK01.02
- VFK03.02
- VFK03.03
- VFK04.02
- VFK11.02
- VFK11.03
- VFK13.01

*Some parts advertised may not be legal for use on public roads.



ABD Racing Split Second Electronic Boost Controller

Finally a true 1.8T ECU upgrade you can do on your own. Split Second Boost Controller is a great alternative to the traditional chip upgrade. One big advantage is you now have the ability to adjust how much boost you want to run. Adjustable from stock to 14.5 psi, gains up to 40hp.

Application	Part Number
1.8T Cars 1999-up (Audi / Volkswagen)	1.8TBSC



ABD Racing / SACHS 1.8T Clutch Upgrade

Finally a sensible upgrade for Beetle / Golf / Jetta 1.8T cars. The original clutch just doesn't last with any sport driving. This upgrade incorporates an entirely new flywheel, clutch disc, clutch cover and alignment tool.

Application	Part Number
Beetle / Golf / Jetta IV 1.8T	70.18TC



4-Bar Fuel Pressure Regulator

Highly recommended when upgrading your 1.8T ECU, or adding a turbo charger to most cars.

Application	Part Number
1993-up most models	280.160.575



K-04 & E-05 Turbo Upgrade

Increased horsepower gains with the reliability of an original part. For full potential you must upgrade several other items, ECU Modification required. Check with your salesperson for full details.

Application	Part Number
Beetle / Golf / Jetta 1.8T	70.TK04.1
A4 / Passat 1.8T	70.TK04.2
Audi TT 225hp K04	70.TK04.3
Audi S4 / A6 2.7T	70.TK04.4
Beetle / Golf / Jetta 1.8T E-05	06A.145.705.ES
Passat / Audi A4 1.8T E-05	05B.145.705.ES
Golf / Jetta / Passat / Audi A3 2.0L Fsi (sport upgrade w/ manifold)	70.20ST





ABD Racing 1.8T Turbo Conversion Kit

ABD Racing now offers complete turbo conversion packages for your 1.8T Audi & Volkswagen. All kits have been tested in real world conditions as well as on the race track for proven performance and power gains. Complete packages include ceramic coated stainless tubing, turbocharger, intercooler, blow-off valve, custom software etc... (Installation for experienced personnel only/ off road/ race use only)

<i>Application</i>	<i>Part Number</i>
Golf/Jetta 1.8T (1999-2005)	70.B18TK

Other Turbo Kits

These kits are complete turbo upgrade conversions. Bolt on serious horsepower gains to turn your daily driver into a fire breather.

<i>Application</i>	<i>Description</i>
A4 1.8T(1996-01)	Complete Turbo conversion add 100-130hp
A4 1.8T (1996-UP)	K-04 Turbo only (requires ECU upgrade)
A4 1.8T (2001-UP)	E-05 Turbo only (requires ECU upgrade)
S4/A6 2.7T 6-spd	Complete turbo(s) upgrade w/manifolds, ecu, turbos etc.

**Some parts advertised may not be legal for use on public roads.*



Turbo XS Manual Boost Controller for 1.8T

For an extra couple of pounds of boost this could be the answer. The manual boost controller will mount in-between the wastegate and pressure valve on your 1.8T engine.

<i>Description</i>	<i>Part Number</i>
Turbo XS Standard Boost Controller	SBC



Billet Aluminum Bypass Valves

These heavy duty bypass valves are able to hold the highest boost pressure reliably ensuring maximum performance.

<i>Description</i>	<i>Part Number</i>
Turbo XS adjustable	RBV.H25
VF Engineering	VFA01.01

**Some parts advertised may not be legal for use on public roads.*

These are the parts that started it all. The ABD Racing Short Shift Kit was our first production accessory. Now many years later, it is still one of our most popular items offered. By changing the geometry of the current shift linkage, the Short Shift Kit will reduce the shift throw by either 25,45 or up to 65% less than the original pattern. Powder coated in bright silver for corrosion protection, the ABD Racing Short Shift Kit will bring you years of driving pleasure. In addition, our weighted linkage component the Power Shifter will make your car feel like new as it glides through the gears. Using O.E. linkage specifications, a counter weight is added to improve gear selection.



ABD Short Shift Kit

Applications	Part Number
Rabbit / Scirocco / Jetta I (4 & 5 speed)	40.10
Golf / Jetta II (4 & 5 speed)	40.20
Golf / Jetta III 4cyl (comes with power shifter)	40.30
Beetle / Golf / Jetta 5-speed (2000-2001.5) (20% reduction) ball style mount	8N0.711.051
Beetle / Golf / Jetta 5-speed (2002-up) (20% reduction) pin style mount	8N0.711.051A

ABD Racing Power Shifters

Applications	Part Number
Rabbit / Scirocco / Jetta I	40.01
Golf / Jetta II & III 4cyl	40.02



Shift Linkage Components

Applications / Part	Part Number
Rabbit / Scirocco / Jetta I 5-speed	
Shift Linkage Short Rod	171.711.574B
Shift Linkage Long Rod	171.711.593E
Shift Rod Selector	171.711.163E
Gear Shift Lever w/ Ball & Spring	171.711.247
Complete Shift Bushing Kit	171.798.211
Golf / Jetta II 5-speed	
Shift Linkage Short Rod	191.711.595A
Shift Linkage Long Rod	191.711.574
Relay Rod Shaft	191.711.173B
Complete Shift Bushing Kit	191.798.211A
Replacement Kit Gear Shift Ball	191.798.116A



Other Short Shift Kits

Audi A4 (1996-2001) W/ Straight shift lever	45141
Audi A4 (2002-up) / S4 (2004-UP)	45142
Audi TT	45146
Beetle (1998-99)	45106
Golf / Jetta VR6 MKIII (1993-99) / Passat VR6(93-97)	45106
Golf / Jetta MKIV 5&6 Speed cars (1999-2005)	45114
Passat B5 & B5.5 (1998-2005)	45141
Golf / Jetta MKV (2005-UP)	451M5



*Some parts advertised may not be legal for use on public roads.



ABD Racing Sway Bar Kits

ABD Racing Sway Bar Kits are the perfect addition for any car to create optimum handling. By installing this package, the body lean in your car will be virtually eliminated. All ABD Racing Sway Bar Kits are manufactured to the highest quality standards and will include all necessary hardware for a complete installation. Polyurethane bushings are used throughout the applications and all parts are covered in a heavy wrap of powder coating to resist road debris. *(All sway bars are lightweight tubular construction. This offers the same torsion value as solid stock parts with 50% weight savings.)



Applications Part Number

Rabbit / Scirocco / Jetta I

25mm Front Complete "Lightweight" 20.025L
 25mm Front O.E. Upgrade "Lightweight" 20.025GL
 28mm Rear Complete "Lightweight" 20.028L
 28mm Rear O.E. Upgrade "Lightweight" 20.028GL

Golf / Jetta II / Corrado G60

25mm Front Complete "Lightweight" 20.125L
 25mm Front O.E. Upgrade "Lightweight" 20.125GL
 28mm Rear Complete "Lightweight" 20.128L

Golf / Jetta III / Corrado VR6

25mm 8v Front O.E. Upgrade "Lightweight" 20.122GL
 25mm VR6 Front "Lightweight" 20.257
 28mm Rear Complete "Lightweight" 20.128L

Beetle / Golf / Jetta IV

NOTE: Front sway bars for the MKIV are recommended on lowered cars to eliminate risk of axle rub on O.E. bar.

25mm Front "Lightweight" 20.325
 28mm Rear "Lightweight" 20.328
 Stainless Steel Adjustable Front End Links (pair) 20.100

Passat B5/Audi A4 (1998-up)

Front 32mm "Lightweight" 20.432
 Rear 28mm "Lightweight" 20.428

Golf / Jetta MK5 / Audi A3 (2005-UP)

26mm Front kit 20.526
 23mm Rear kit 20.523



*Some parts advertised may not be legal for use on public roads.

www.abdracing.com



ABD Racing Upper Stress Bars

We have been saying it for years and the fact still remains that "ABD Racing Upper Stress Bars are the best! Plain and simple. "ABD Racing Upper Stress Bars are all geometrically designed for each chassis. All chassis are not created equal and all require a different approach in reducing give in the body. The twin tube design proves to be the best design to eliminate any flex or twisting during hard driving. Notice all the applications look different from each other as the same design won't provide the optimum brace. All parts are jig tested before and after they're welded completely for a proper fit. ABD Racing Upper Stress bars are powder coated in a bright silver for the latest in appearance and corrosion protection.



ABD Racing Upper Stress Bars

Applications	Part Number
Rabbit / Cabriolet / Scirocco II 8v / Jetta I (1975-93)	30.0010
Golf / Jetta II 8& 16v / Corrado G60 (1985-92)	30.0021
Passat (1990-97)	30.0040
Golf / Jetta III (1993-98)	30.0040
Beetle (1998-up)	30.0050
Golf / Jetta IV (1999-up)	30.0060
Golf / Jetta V (2005-UP)	30.0070



ABD Racing Lower Stress Bar for A1 chassis

Our bar is a four point unit that ties together the vulnerable subframe of the A1 chassis. A replica of the Scirocco 16V bar, this part is a must for performance driving. (Fits manual transmission cars only !)

Applications	Part Number
Rabbit / Cabriolet / Scirocco / Jetta I	30.0001



*Some parts advertised may not be legal for use on public roads.



ABD Racing Urethane Components

ABD Racing premieres a fine line of urethane components, covering a wide variety of applications for your car. Made of stringent pol

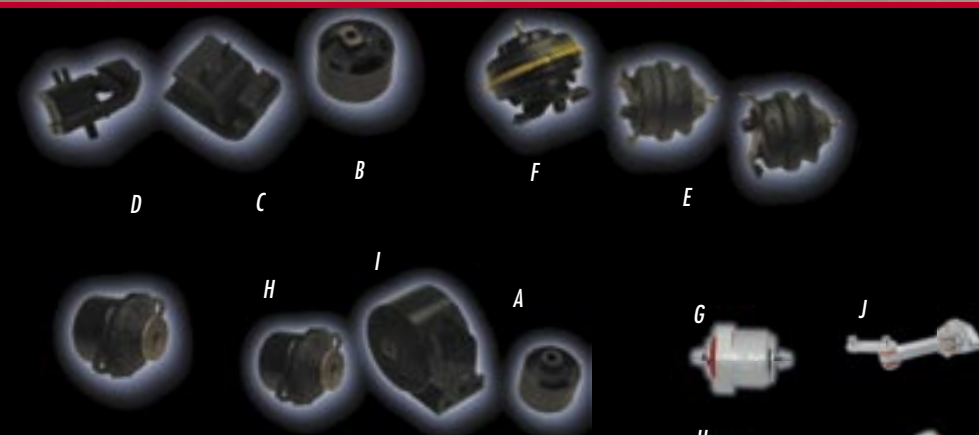
Applications	Part Number
Rabbit / Scirocco / Jetta I	
Front Lower Control Arm Set	60.112
Rear Trailing Arm Set	60.001
Steering Rack Set	60.100
Rear Shock Tower Bushing Set	60.010
Front Motor Mount	60.002
Adjustable Front Bump Stops	60.6524
O.E. Front Sway Bar Bushings 16.5mm	60.116
Small Right Side Motor Mount Insert (2.530")	60.6529
Large Right Side Motor Mount Insert (2.943")	60.6528
Left Side Transmission Mount Insert	60.6530

Applications	Part Number
Golf / Jetta / Corrado	
Front Lower Control Arm Set	60.007
Rear Axle Beam Bushing Inserts	60.6517
Manual Steering Rack Bushings	60.101
Power Steering Rack Bushing	60.102
Rear Shock Tower Bushing Set	60.011
Right Rear Motor Mount Insert	60.6535
O.E. Front Sway Bar Bushings 15mm	60.015
O.E. Front Sway Bar Bushings 18mm	60.018
Motor Mounts for	
Golf / Jetta III (1993-98) front motor mount	60.022K
Beetle/ Golf/ Jetta IV rear motor mount	60.023K



O.E. & Heavy Duty Motor Mount Replacements

Applications	Part Number
Rabbit / Scirocco / Jetta I	
(A) O.E. Left Side Motor (Transmission) Mount	199.214J
(B) H/D Large Right Side Motor Mount	199.120F
(C) H/D Rear Transmission Mount	199.140
(D) Motorsport Style Rear Transmission Mount	199.140M
Golf / Jetta / Corrado G60	
(E) O.E. Front Golf/ Jetta II (1985-1987)	191199279C
(F) O.E. Front Golf / Jetta II (1988-1992)	191199279E
O.E. Front Mount Golf/ Jetta II 16v (1990-92)	357199279B
O.E. Front Mount Corrado G60	357199279B
H/D Front Mount Golf / Jetta 16v / Corrado G60	57199279BHD
H/D Front Mount Golf / Jetta III	1H0199609B
O.E. Left Transmission Mount Golf / Jetta 16v (1990-92) / Corrado G60	357199381C
(H) O.E. Left Transmission Mount Golf / Jetta II (1985-92/8V; 1987-89/16V)	191199402C
(I) O.E. Right Rear Motor Mount Golf/ Jetta II (SOLID)	191199262A
O.E. Right Rear Motor Mount Golf / Jetta II 16v (1990-92)	535199262
O.E. Right Rear Motor Mount Corrado G60	535199262



VF Engineering Aluminum/ Urethane Motor Mounts

(G)Golf/ Jetta MKIII all/ CorradoVR6	Front engine mount	VFA04.01
(H)Golf/ Jetta MKIII all/ Corrado VR6	Rear engine mount	VFA08.01
(I)Golf/ Jetta MKIII all/ Corrado VR6	Transmission mount	VFA09.01
(J)Golf/ Jetta MKIV all	Rear pendulum mount	VFA02.01
(K)Golf/ Jetta MKIV 2.0L/ 1.8T	Engine mount	VFA02.03
Golf/ Jetta MKIV VR6	Engine Mount	VFA02.02
(L)Golf / Jetta MKIV all	Transmission mount	VFA02.04

*Some parts advertised may not be legal for use on public roads.

ABD Racing Quick Flow Air Filter System

The Factory air box robs throttle response as well as genuine horsepower; ABD Racing's answer is our very own Quick Flow Air Filter System. These units require the removal of the original air box followed by a simple installation of an aggressive looking red anodized aluminum bracket. These kits utilize the largest K & N filter element available per application with more surface area than most competitors systems. This results in More air inducted directly into the mass air sensor and throughout the intake system providing greater efficiency, a great sound when on the gas, and a horsepower gain you can feel. In the tradition of ABD Racing supplying the highest quality in performance parts, we now have a virtually indestructible Billet aluminum Air Mass Sensor adapter for the 70.Q40 Digifant injection cars.



ABD Racing Quick Flow Air Filter System

C.A.R.B. approval number applies to model years of 1988-1995 per EXO# D-416

Applications

- Beetle 2.0L
- Beetle 1.8T / Audi TT (1980-up)
- Corrado G60
- Corrado VR6
- Golf / Jetta II 8V 1988-92 (DIGIFANT INJECTION)
- Golf / Jetta III 4-cyl
- Golf / Jetta III VR6
- Golf / Jetta IV 2.0L 4cyl
- Golf / Jetta IV VR6
- Golf / Jetta MKIV VR6 24V (2002-up)
- Beetle / Golf / Jetta IV TDI
- Golf/Jetta IV 1.8T
- Passat 1.8T (1998-2005)
- Audi A4 1.8T (1996-up)
- Audi S4 / A6 2.7T (1999-2004)

Part Number

- 70.Q80
- 70.Q81
- 70.Q10
- 70.Q70
- 70.Q40
- 70.Q20
- 70.Q30
- 70.Q80
- 70.Q90
- 70.Q91
- 70.Q81
- 70.Q81
- 70.Q18
- 70.Q18
- 70.Q27



State if your car is 5 speed or automatic when ordering
 NOTE: Most applications, including all VR6 & 1.8T cars and most 2.0L cars from 1997 on, will also require the K & N Air Pump Filter in addition to our Quick Flow System.

*Some parts advertised may not be legal for use on public roads.

K & N Air Pump Filter

A snug fitting filter to cover the input of the air pump when removing the O.E. hose for Quick Flow installation. Required on all VR6 cars from 1993–up, and 4cyl cars from 1997–up.

NOTE: This part required on most applications, including all VR6 & 1.8T cars and most 2.0L cars from 1997 on, when using our Quick Flow System.

Description

K & N Air Pump Filter

Part Number

RC.2540

Other K&N Products

K & N Filter care kit (Spray oil & cleaner)

99.5000



ABD Racing L.A.N. Pipe Summer extension

This is a 4" extension to be used in conjunction with our L.A.N. Pipe. The summer extension will bring the filter element from behind the bumper to a new location right below the bumper support. On most bumpers / body kits the filter will now be fully exposed. Performance is great but to be used only in dry weather. (Not to be used in any type of bad weather, especially wet etc. . .)

Applications

ABD Racing summer extension
Passat 2.0l FSI (2006-UP)

Part Number

70.LAN.5
70.LAN.7K



*Some parts advertised may not be legal for use on public roads.



ABD Racing L.A.N. Pipe Cold Air Intake System*

ABD Racing offers our award winning fresh air intake systems for many models. All LAN Pipes are 3" mandrel bent stainless steel tubing that is ceramic coated for heat resistance and corrosion protection. Once installed the air filter element is located directly behind the bumper skin to ensure filter protection from road debris and still allow fresh air into the intake system. In addition we offer the "Summer Extension" – a 4" extension to the LAN Pipe system to drop the filter even lower in the front of the vehicle. (Not to be used in any type of bad weather. Do not use when raining etc. . .)

Applications

Golf/ Jetta MKIV 1.8T/ 2.0L/ 12V VR6
Golf / Jetta 24V VR6 2002-UP
R32 GTI
Golf/ Jetta MKIII VR6
Golf / Jetta MKV 2.5L (2005-Up)
Golf / Jetta MKV 2.0T (2005-Up)
Passat 2.0l FSI (2006-Up)

Part Number

70.LAN.1K
70.LAN.2K
70.LAN.3K
70.LAN.4K
70.LAN.5K
70.LAN.6K
70.LAN.7K



ABD Racing Stage 2 Full Intake System

Kit includes new MAF Housing and two piece 3" tubing system with silicone coupers and complete hardware.

Applications

Gold/Jetta/Passat 2.0L FSI (2005-up)

Part Number

70.LAN.67

ABD Racing BIGBORE® Intakes

Quality is always the main concern when creating ABD Racing products and the Big Bore Intake program is another example of a perfect part that shines with excellence in craftsmanship. Originally, cars are equipped with an undersized plastic or flexible rubber intake tube. ABD Racing Big Bore Intakes are constructed from oversized 3" stainless steel tubing that is mandrel bent and then powder coated bright silver to perfection for an increase in air flow into your throttle body. Theoretically, more air equals better performance, and this is the case with the ABD Racing replacement intake system. As mentioned previously, all parts are mandrel bent to ensure a non-disturbed flow of air that cut & welded parts cannot match. Kits come complete with all necessary hardware for a proper installation. (not legal for use on public roads/race use only)



ABD Racing BIGBORE® Intakes

Applications

Part Number

(A) Rabbit / Cabriolet / Scirocco 8V / Jetta I (fuel injected only)	70.900
(B) Golf / Jetta II 8v (1985-87)	70.910
(C) Golf / Jetta II 8v (1988-92)	70.911
(D) Golf / Jetta II 16V (1987-89)	70.920
(E) Golf / Jetta II 16V (1990-92)	70.921
(F) Golf / Jetta III 8V (1993-97)*	70.930

*1996-97 vehicle will have either a 2.5" or 3" throttle body.

When placing an order please advise your salesperson which size is needed for your application.

(G) Golf / Jetta III VR6 (1994-98)**	70.931
(H) Golf / Jetta IV 2.0L**	70.940
(I) Beetle 2.0L**	70.940
(J) Golf / Jetta IV VR6**	70.941
(K) Golf / Jetta 24v VR6 (2002-up)**	70.942
Golf / Jetta V 5cyl (2005-up)	70.943
Audi S4 / A6 2.7T (1999-2004)	70.927

** NOTE: these models must have a sensor removed from O.E. part and attached into new intake.



*Some parts advertised may not be legal for use on public roads.

ABD Racing Cross-Drilled Brake Rotors

ABD Racing Cross-Drilled Brake Rotors are designed to give the enthusiast the leading edge in stopping power. Starting with vented rotors (where applicable) we then inc Metalmaster pads, Brake fade will be only a memory. On most applications a few different options may be available. Listed below are the rotor sizes as well as the options. Fo

In addition, most ABD Racing drilled rotors are available in a ATE Power Disc form. ATE is a German O.E Manufacturer that has released a nice looking as well as a very functional grooved pattern. For a power disc option just add the letter "P" after our Part Number.

Description	Part Number	Description	Part Number
9.4" (239mm) Front Rotors (Brazil)	D50.094B	8.9" (226mm) Rear Rotors 4-lug	D50.090R
9.4" (239mm) Front Rotors (German)	D50.094G	8.9" (226mm) Rear Rotors 5-lug	D50.095R
10.1" (256mm) Front Rotors	D50.101	9.1" (233mm) Rear Rotors 5-lug (Beetle / Golf / Jetta IV)	D50.101B
11.0" (280mm) Front Rotors 4-lug	D50.110	Beetle / Golf / Jetta IV 1.8T / VR6 (1999-up)	D50.011BV
11.0" (280mm) Front Rotors 5-lug	D50.115	Passat B5 / Audi A4 Front (1998-up)	D50.113P
11.0" (280mm) Front Rotors 5-lug (Beetle / Golf / Jetta IV)	D50.011B	Passat B5 / Audi A4 Front (1999-up)	D50.114P
11.3" (288mm) Front Rotors 5-lug only	D50.415	Passat B5 / Audi A4 Rear (1998-up)	D50.101PR
		Audi TT 225 / GTI 337/20th / Jetta GLI Front	D50.211F
		Audi TT 225 / GTI 337/20th / Jetta GLI Rear	D50.210R
		Golf / Jetta MK5 (2005-UP) Front	D50.5110
		Golf / Jetta MK5 (2005-UP)Rear	D50.5100



Original Replacement Brake Rotors

OEM Replacements at a fraction of dealer list or a great upgrade for the budget minded. For grooved "Power Disc" option just add a "p" at the end of each Part Number, (available for most applications) Part Number and pricing are per pair.

Description	Part Number
9.4" (239mm) Vented Front Rotors (Brazil)	50.094B
9.4" (239mm) Vented Front Rotors (German)	50.094G
10.1" (256mm) Vented Front Rotors	50.101
11.0" (280mm) Vented Front Rotors 4-lug	50.110
11.0" (280mm) Vented Front Rotors 5-lug	50.115
11.0" (280mm) Vented Front Rotors 5-lug (Beetle/Golf/Jetta IV)	50.011B
11.3" (288mm) Vented Front Rotors 5-lug only	50.0415
8.9" (226mm) Rear Rotors 4-lug	50.090R
8.9" (226mm) Rear Rotors 5-lug	50.095R
9.1" (233mm) Rear Rotors 5-lug (Beetle/Golf / Jetta IV)	50.101B
Audi TT (225hp) / GTI "337" Front	50.211F
Audi TT (225hp) / GTI "337" Rear	50.210R

ABD Racing Stainless Braided Brake Line kits

ABD Racing Brake lines are manufactured using the highest quality and safest materials available. Teflon tubing wrapped by hi-grade stainless steel braiding will give a more positive pedal feel as well as greater stopping power. Kit's below are listed in order of pieces per part, if you are unsure of which kit is for your car please feel free to call for assistance. D.O.T. approved lines add \$30.00 per kit.

Description	Part Number
All cars 1980-up with Rear Drum Brakes	50.004
All cars 1980-92 with Rear Disc Brakes	50.006
Carrado G60	50.06C
Golf / Jetta III 4cyl (1993-98) w/ Rear Drum Brakes	50.004A
Golf / Jetta III 4cyl (1993-98) w/ Rear Disc Brakes	50.006A
VR6 Vehicles w/ 11.0" Front Rotors (1992-95)	50.006A
VR6 Vehicles w/ 11.3" Front Rotors (1996-up)	50.006B
Beetle / Golf / Jetta IV	50.004B
Audi A4 / Passat (1998-05)	50.006P



ABD Racing Brake Caliper Paint Kit

Description	Part Number	Description	Part Number
Black	727.BL	Yellow	727.YEL
Silver	727.SIL	Blue	727.BLU
Red	727.RED		

*Some parts advertised may not be legal for use on public roads.



Big Brake Conversions

If the original brakes don't have enough stopping power for you, this might be the answer. Increase the size of the front rotors with a complete bolt on performance brake package. In any case these conversions are for the serious performance minded enthusiast.

Application	Description	Part number
Audi A4 (96-01)	328 x 28 2-piece front kit	1A1.6005A
Audi A4 (96-01)	332 x 32 2-Piece front kit	1B1.7001A
Audi A4 (2002-04)	320 X 32 1-Piece front kit	1H4.6002A
Audi A4 (2002-04)	355 X 32 2-Piece front kit	1B1.8002A
Audi S4 (2000-02)	320 X 32 1-Piece front kit	1B4.6001A
Audi S4 (2000-02)	355 X 32 2-Piece front kit	1B1.8002A
Audi S4 (2004-UP)	355 X 32 2-Piece front kit	1B1.8002A
Audi A6 2.7T (1998-04)	355 X 32 2-Piece front kit	1B1.8002A
Audi TT (1999-UP)	323 X 28 1-Piece front kit	1A4.6001A
Audi TT (1999-UP)	328 x 28 2-piece front kit	1A1.6007A
VW Golf/Jetta/Beetle 1.8t /VR6 MK4 (1999-2005)	323 X 28 1-Piece front kit	1A4.6002A
VW Golf/Jetta/Beetle 1.8t /VR6 MK4 (1999-2005)	328 x 28 2-piece front kit	1A1.6011A
VW R32 GTI MK4	355 X 32 2-Piece front kit	1B1.8043A
VW Golf / Jetta MK5 (2005-UP)	328 x 32 2-Piece kit	50.BBMK5



Size	Application	Part Number
12.3"	Corrado G60/Jetta 16V (1990-92)	111.5001A
12.3"	Golf/Jetta III 2.0L (1993-98) Passat 4cyl (1990-97)	111.5001A
12.9"	Passat B5 1.8T (1998-up)	111.6002A

Rear Disc Brake Conversion

Converts rear drum to rear disc. Includes calipers, pads, bearings, stub axles, and drilled & slotted rotors. (Proportioning Valve adjustment required).

Application	Part Number
Golf / Jetta (1985-98)	EBK.698.226.A1-A3-4R



Mintex Red Box Performance Brake Pads

Applications	model year	Front	Rear
Beetle/Golf/Jetta IV 1.8T & VR6	1999-up	MBD1741AF	MBD1377AF
Golf / Jetta III VR6 (11.3" Front Rotors)	1996-98	MDB1741AF	D3031M
Golf / Jetta IV 2.0 / TDI	1999-up	MD1811AF	MDB1377AF
Golf / Jetta IV VR6	1999-up	CALL	MDB1377AF
Beetle	1998-up	MD1811AF	MDB1377AF
Passat - All	1998-up	MDB1741AF	MDB1377AF
Passat VR6	1996-97	MDB1741AF	D3031M
		(no wear sensor)	
Golf / Jetta MKIV 1.8T/VR6/Passat	1998-up	MDB2041AF	MDB1377AF
		(w/ female sensor connection)	
Golf / Jetta MKIV 1.8T/VR6/Passat	1998-up	MDB1531AF	MDB1377AF
		(w/male sensor connection)	



Metalmaster Performance Brake Pads

Metalmasters are the best quality brake pads on the market today. All parts are constructed solely from powdered metal making these the cleanest pads available. The special construction of these pads give Metalmasters a very long life in addition to absorbing heat better than any other street performance pad.

Applications	Model Year	Front	Rear
Rabbit / Scirocco / Jetta I (Solid Rotors)	1980-84	D300M	559
Rabbit / Scirocco / Jetta I (Vented Rotors)	1980-84	D339M	559
Scirocco II 16V	1986-88	D387M	D3031M
Cabriolet	1985-92	D539M	559
Cabrio	1994-up	D387M	662
Corrado	1990-94	D1310M	D3031M
Golf / Jetta II (Solid Rotors)	1985-92	D330M	559
Golf / Jetta II (Vented Rotors)	1985-92	D539M	D3031M
Jetta II 16V	1990-92	D387M	D3031M
Golf / Jetta III 4cyl (w/ Rear Disc)	1993-98	D387M	D3031M
Golf / Jetta III 4cyl (w/ Rear Drum)	1993-98	D387M	662
Golf / Jetta III VR6 (11.0" Front Rotors)	1993-95	D1327M	D3031M
Passat 4 cyl	1990-97	D387M	D3031M
Passat VR6 (11" ft. Rotors)	1993-96	D1310M	D3031M

ABD Racing Beetle Cup Style Front Bumper Spoiler

Designed by and manufactured exclusively for Autobahn Designs/ABD Racing. Made from flexible poly urethane, this replica of the Beetle cup car installs as a replacement for the front bumper cap. Included in the kit is powder coated mesh for road debris protection as well as giving the front the race look of the famed Cup race car.

Applications	Part Number
Beetle (1998–up)	10.BC10

Additional Parts to complete Beetle Cup Look Description

ATS Right Side Skirt	C19VB46
ATS Left Side Skirt	C19VB45
ATS Rear Apron	C19VB44
ATS Rear Spoiler	C19VB42



ABD Racing Sport Grilles

ABD Racing is proud to introduce our DTM Style grille replacement for the Jetta IV as well as our ever popular grille for the Jetta III. These parts easily mount into the factory mounting locations for an easy installation. The large opening up front assures improved cooling in addition to great looks, both important factors during those high speed assaults. Expanded aluminum mesh gives the grille an extra kick in the race look direction as well as genuinely protecting vital components from harsh asphalt predators.

Applications	Part Number
1993–98 Jetta III	01.1000
New Passat (2001–up)	10.2000
Jetta IV (1999–up)	10.3000
Golf/Jetta V (2005–up)	10.5000



ABD Racing Grille Spoilers

A very clean finishing touch. By adding one of these grille spoilers, the area between the hood and grille work will visually be transformed to a much cleaner appearance.

Applications	Part Number
Cabriolet / Rabbit Single Round	10.047
Cabriolet (1988–92) Dual Round	10.048
Scirocco II (1982–88) MUST MODIFY	10.085
Golf / Jetta II (1985–92) w/ Aerodynamic Headlights	10.045
Golf / Jetta II (1985–92) w/ Round Headlights	10.046
Corrado (must modify to fit U.S. Headlights)	10.075

Lower Grille Blend	
Golf / Jetta II (1985–92) w/ Round Headlights	10.46L



ABD Racing Headlamp Lids

Covering the very top portion of the headlight, this really finishes off the clean look for your Golf or Jetta III.

Applications	Part Number
Golf III (1993–98)	10.4400
Jetta III (1993–98)	10.4000



ABD Racing Carbon Fiber Program

ABD Racing Carbon Fiber Engine components are a necessary imitation product can recreate. All ABD Racing Carbon Components laminated in sitting proudly on top.

Applications

- 2.0L 8V Golf / Jetta MKIII (1993-98)
- VR6 Golf / Jetta MKIII (1993-98)
- VR6 Golf / Jetta MKIV (1999-2001)
- VR6 Golf / Jetta 24V (2002-up)
- 2.0L 1Beetle (1998-2001) / Golf / Jetta MKIV 1999-up)
- Beetle 1.8T (1999-2001)
- Beetle 1.8T (2002-up)
- Golf / Jetta IV 2.0L
- Golf / Jetta 1.8T (1999-up)
- Golf / Jetta V 5cyl (2005-UP)
- Golf / Jetta V 2.0T (2005-UP)
- Passat 1.8T (late 1998-up)
- Oil Cap Cover

Description

- intake manifold cover
- engine sound cover
- engine cover
- engine cover
- engine cover
- engine cover
- engine cover
- engine cover
- engine cover
- engine cover
- engine cover
- 3-pc engine cover etc...set

Part Number

- 70.C20
- 70.C30
- 70.C30A
- 70.C30B
- 70.C70
- 70.C80
- 70.C80A
- 70.C70
- 70.C91
- 70.C30C
- 70.C92
- 70.C40
- 70.C05



*Some parts advertised may not be legal for use on public roads.

Carbon Fiber Hoods

Glossy carbon finish with a factory fit. Direct bolt on replacement using original hood latch and hinges.

*** Silver carbon also available ***

Applications	Part Number
Golf MKIII (1993-98)	90.CH10
Beetle	90.CH20
Golf MKIV (1999-up)	90.CH30
Jetta MKIV (1999-up)	90.CH40
Audi A4 (1996-99) 4-door	90.CH50
Golf/Jetta MKV (2005-Up)	90.CH60



ABD Racing Carbon Fiber Front Splitters

ABD Racing doesn't mess around when it comes to form and function. In addition to the bolt on accessories offered in carbon fiber, we also have a DTM Style front splitter. This unit comes in pure Carbon Fiber with unique Stainless Steel Adjusters made exclusively for ABD Racing. This is a must for the latest in Aerodynamic Improvements.

Applications	Part Number
Golf / Jetta II (1990-92 style bumpers)	10.CF20
Golf / Jetta III (1993-98)	10.CF30



*Some parts advertised may not be legal for use on public roads.

ABD Racing Custom Car Cover

Manufactured from the highest quality materials available, each cover is custom made per vehicle description. All abd racing car covers utilized a special material able to withstand any type of extreme heat or harsh weather. In addition to the added beauty of the two tone red / dark grey material, the ABD Racing logo is proudly placed directly on the front end. (call for additional applications)

Applications	Part Number
Beetle (1998–up)	90.VW2012.R94
Golf / GTI MKII (1985–92)	90.VW2600.R94
Golf / GTI MKIII (1993–1998)	90.VW2004.R94
Golf / GTI MKIV (1999–up)	90.VW2134.R94
Jetta MKII (1985–92)	90.VW2315.R94
Jetta MKIII (1993–98)	90.VW2007.R94
Jetta MKIV (1999–up)	90.VW2173.R94
Passat B5 / B5.5 (1998–up)	90.VW2010.R94



ABD Racing Floor/Trunk Mats

Adding comfort and protection to the interior of your car is easy with the installation of ABD Racing logo floor and rear trunk mats. These mats are manufactured to O.E. Quality standards for a perfect fit every time. The bottom side of each mat is coated with a long lasting rubber to keep everything in place. All factory colors are available for most years and models with your choice of a contrasting color for the powerful ABD Racing logo in the center of each front mat as well as on the trunk mat. (Specify the year and model of your car when ordering)

Description	Part Number
4-Piece Floor Mat Set	80.mats
Rear Trunk Mat	80.trunk



ABD Racing Billet Aluminum Gauge Bezel

Install any 2" gauge with the appearance it was done at the factory. Now at perfect eye level you can monitor engine vitals such as boost level or oil pressure. Our kit includes one billet gauge bezel either anodized black for that original equipment look or to stand out order the silver finish.

(NOTE: must relocate headlight switch)

Application	Black	Silver
Golf/Jetta MKIV (1999–UP) / Beetle / Passat (1998–up)	80.G.10B	80.G10S
Golf/Jetta MK5 (2005-UP)		

Additional Recommended Parts

VDO Vision Turbo Boost Gauge	150.121
VDO Turbo Boost Gauge Tubing Kit	150.851
VDO Vision Oil Pressure (electric)	350.108
VDO Oil Pressure Sending Unit	Call
Auto meter Ultra Light Turbo Boost/ Vac. (includes Tubing Kit)	4301
Auto meter Ultra light Oil Pressure Gauge	4327



(For a full selection see our gauges in the accessories section of this catalog)

ABD Racing Silver Gauge Face Replacements

Upgrade the interior of you Golf/Jetta mkiv or Passat 1998–up with our easy to install silver gauge face replacements. These are die cut transparent units manufactured to perfectly fit your year and model of car. Our gauge faces are not cheap decals and will give you a lifetime of great looks with the O.E. fit and finish. (specify your cluster configuration when ordering, for assistance contact our sales department)

Description	Part Number
Application: Golf / Jetta MKIV (1999–up) / Passat (1998–up)	
ABD Gauge Face Replacement / Auto trans / 8 light	80.G20.1
ABD Gauge Face Replacement / full screen / 8 light	80.G20.2
ABD Gauge Face Replacement / full screen / 6 light	80.G20.3
ABD Gauge Face Replacement / half screen / 8 light	80.G20.4
ABD Gauge Face Replacement / half screen / 6 light	80.G20.5
ABD Gauge Face Replacement / Auto trans / 6 light	80.G20.6



ABD Racing Stainless Door Sills

It's never too late to add a set of these stainless doorsills. Each part is formed from sheet stainless steel covered with a brushed finish and topped off with an ABD Racing logo placed proudly on top.

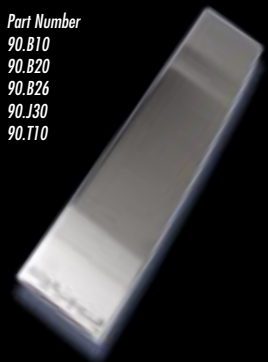
Application	Part Number
Beetle (1998-up) / Golf IV (1999-up) 2-door	80.D10
Golf (1999-up) / Jetta IV 4-door (front only)	80.D20
Passat B5 (1998-up) Front & Rear Set	80.D30
Golf III (1993-98) 2-door	80.D13
Golf / Jetta III (1993-98) 4-door (FT/RR)	80.D23
Golf/GTI MKV (2005-Up) 2-door	80.D70
Jetta/Golf MKV (2005-Up) 4-door	80.D71
Corrado (1990-94)	80.D40
Beetle Convertible	80.B11
Audi A4 B6 (2002-UP)	80.D24
Audi A6 (1999-2004)	80.D16



ABD Racing B-Pillar Stainless Trim

Custom made per Vehicle's B-pillar, this stainless trim panel adds an extra elegant look to your car.

Application	Part Number
Beetle	90.B10
Audi A4 (2002-UP)	90.B20
Audi A6 (1999-UP)	90.B26
Golf 4-dr / Jetta (2005-up)	90.J30
Touareg (2004-up)	90.T10



ABD Racing Billet Aluminum Flower Vase for the Beetle

To add to the already adorable look of the New Beetle, ABD Racing created the Billet Aluminum flower vase. This vase allows you to show off your personality to the world by placing the flower of your choice be it a tumble weed or a rose bud, in an exciting shiny aluminum vase.

Description	Part Number
Beetle Flower Vase	80.vase



ABD Racing Aluminum Pedal Covers

The ABD Racing stamped aluminum pedal covers are a perfect addition to the interior of your car. Both improved appearance and great function, these custom made pedal covers are a must for performance driving.

Application: Most Cars	Part Number
Manual Trans	80.PC10
Auto Trans	80.PC20
Golf / Jetta MKS (2005-UP) Manual Transmission	80.PC11
Golf / Jetta MKS (2005-UP) Automatic Transmission	80.PC21

ABD Racing Aluminum footrest

ABD Racing aluminum footrests are the perfect addition to the interior of your car. Easy to install, these are manufactured from high quality thick gauge aluminum for lasting looks and security.

Golf (1993-98) / Jetta MKIII	80.F10
Beetle (1998-up) / Golf / Jetta MKIV (1999-up)	80.F20
Golf / Jetta MKS (2005-UP)	80.F30



*Some parts advertised may not be legal for use on public roads.

ABD Racing Spark Plug Wires

A bright red pure silicone covering is used over steel wire coated in copper to create the highest conductivity. All wires use factory ends for a lifetime of reliability. (Also available in yellow)



Applications	Part Number
Rabbit / Scirocco / Jetta I	70.1155
Scirocco II 16V	70.1116
Golf / Jetta II / Cabriolet / Scirocco II (1984.5-up)	70.1145
Corrado G60	70.1145
Golf / Jetta II 16V / Passat 16V	70.1116
Fox	70.1145
Golf / Jetta III 2.0 4cyl	70.1117
VR6 w/ Distributor (1992-93)	70.1146S
VR6 w/o Distributor (1994-up)	70.1146
Beetle 2.0L	70.199
Golf / Jetta IV 2.0L	70.199
Golf / Jetta IV VR6 (1999-2001)	70.1149

Replacement parts

16v 2.0L Impulse sensor 2.0 L 16v owners will need to remove the old part when installing our plug wires. If your old part has a lot of miles on it, we recommend replacing the unit.

Description	Part Number
16V Impulse Sensor (must modify to fit 8mm wires)	
16V 2.0 Impulse Sensor	356.914.213

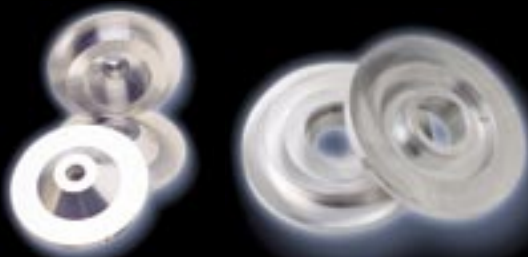


ABD Racing Billet Aluminum Spring Caps

In the tradition of creating exciting and innovative new products, ABD Racing is proud to offer the only true Billet Aluminum spring caps in our industry. Starting with Aerospace quality aluminum stock, these units are created by utilizing a computer program directed towards making these parts specifically. This means a terrific looking piece every time as well as the strongest method available in production. We have applications for both 4 and 6 cylinder car's lowering the front end down 10-12mm, depending on the year and model of the vehicle.



Applications	Part Number
4cyl cars (1981-95)	70.400
6cyl cars (1992 to early 1995 / A2 Cars w/ VR6 conversion)	70.600



ABD Racing Strut Bearing Cap Covers

If you want to dress up your engine compartment with a great new part from ABD Racing, try our Strut Bearing Cap Covers. This extremely new part is designed to fit on the top of the strut bearing to give the engine a little extra shine. It has a classy ABD Racing logo across the top of the shiny billet aluminum part. This piece easily attaches in seconds.

Applications	Part Number
Most Models (1985-98)	90.1086
Golf / Jetta MKIV (1999-up)	90.1087
Golf / Jetta V	90.1088

ABD Racing Logos

These semi domed logos fit perfectly on the new beetle and MKIV Golf, Jetta IV & Passat steering wheels. In addition you can apply these stickers to many other areas such as wheel center caps etc... Easy to install in seconds available with either silver or black background.

Description	Part Number
ABD LOGO black w/silver background	90.LOGOB
ABD LOGO silver w/black background	90.LOGOS



ABD Racing Stick On Emblems

These black emblems look great anywhere.

Description	Part Number
ABD Racing Emblem (chrome)	90.CBDG
ABD Racing Emblem (silver)	90.SBDG
ABD Racing Emblem (red)	90.RBDG
ABD Racing Emblem (white)	90.WBDG



ABD Racing Decals

Applications

- ABD Racing Windshield Decal
- ABD Racing Medium Decal
- ABD Racing Small Decal

Specify color when ordering (charcoal / red / white / silver)



Part Number
S.101
S.102
S.103

ABD Racing Decal Sheet

- Red
- Blue
- Silver
- Green



ABD Racing "German Tuning / American Pride" decal

S.R5
S.B5
S.S5
S.G5
S.GTAP

ABD Racing License Plate Frames

Black frame with colored logos, sold individually.

Description

- White logo
- Red logo
- Silver logo



Part Number
90.WFRM
90.RFRM
90.SFRM

ABD Racing Poster

Description

- Jetta Wagon in Desert
- Bikini

Part Number
P.JETW
BJETV



ABD Racing Rear Badge

Made with the same letters as the O.E. emblem. Now the ABD characters can be proudly displayed on the rear of your vehicle.

Description

- ABD Racing Rear Badge

Part Number
90.RBADGE



ABD Racing Apparel



ABD Racing Embroidered Work Jacket

This top quality heavy weight work jacket is the exact jacket Team ABD Racing wears. Dark grey in color with bright silver stitching. Sizes are available in -Small, Medium, Large, Extra large and XX Large.

Description	Part Number
ABD Racing Logo jacket	T.COAT

ABD Racing Button Up

Description	Part Number
ABD Racing Button Up	T.WORKS



ABD Racing Polo

Description	Part Number
ABD Racing Polo	T.POLOS



ABD Racing T-Shirts

Made from quality 100% cotton, these are the ultimate in enthusiast apparel! Male shirt available in large, Extra Large and XXL. Girl sizes S, M, L.

Description	Shirt Color	Part Number
(A) Falcon Logo	Black or white shirt	T.GTAP
(B) Cast Logo Jersey	Black/White	T.CASTJ
(C) Girlie Falcon Logo Jersey	Black/White	T.GTAPG
1.8T Logo	White shirt	T.18T
Cast Logo	Black or white shirt	T.CAST
Golf MKIV	White shirt	T.GOLF
Jetta MKIV	White shirt	T.JETTA
Plain Star	Black or White shirt	T.PSTAR
Girl Cast Logo	White	T.GCAST



ABD Racing Hats

Black flex-fit® hat with the ABD Racing Cast logo fully embroidered proudly up front.

Description	Part Number
Small/Medium	H.HATS
Large / Extra Large	H.HATL



ABD Racing Sunglasses

Hot styling designed to keep you cool. Wide arms with u.v. coated real glass lens, this quality piece is available in two color choices.

Description	Part Number
Tortoise	G.TSG
Black	G.BSG



ABD Trucker Hat

Description	Part Number
	H.THAT



ABD MINI "Monster Force" Filter System

The small factory air box robs throttle response as well as genuine horsepower. The Monster force filter system will increase power all throughout the entire RPM range. From down low torque to high speed horsepower, a definite increase you can feel. (not legal for use on public roads/race use only) Utilizing the front fresh air intake, our system joins the intake hose with an "air cradle" to insure proper cool air flow at all times. In addition our system is unique compared to others as we went the extra step to provide the most performance for your car. The Monster Force filter system includes a mandrel bent powder coated replacement for the factory flex hose. The mandrel bent replacement will allow more unrestricted air to flow into the intake system. More air, less restriction = more horsepower.

Application	Part Number
MINI Cooper	M70.M10
MINI Cooper S	M70.M20

ABD Mini Logo Floor & Trunk Mats

The perfect addition to any car. If it's a custom look you want, then install a set of these high quality plush floor mats. Sold in a set of four (two front and two rear). All mats are custom made for a perfect fit. Most colors available, Specify color when ordering

Application	Part Number
MINI Cooper - 2002 -up 4-piece floor mat set	M80.MATS
MINI Cooper - 2002 -up Trunk mat	M80.TMAT

Autothority Performance Chip Upgrade

Performance chips are one of the single largest improvements in horsepower you can do. MINI Cooper hp gains are claimed to be 15 hp with a 18 ft.lbs increase in torque. Cooper "s" owners will benefit 25 hp gain! (ecu must be sent to us for conversion)

Application	Part Number
MINI Cooper	M70.MECU
MINI Cooper "S"	M70.SECU

Magnaflow Exhaust

Magnaflow was one of the first companies to market with a cat back exhaust system for the Mini Cooper and Cooper S. Monster Mini is proud to offer these systems which are 100% full stainless steel for years of use, with good looks and power as well. With a deep, throaty tone, these exhausts will give your Mini the power it needs and the performance you want.

Mini Cooper	15741
Mini Cooper "S"	15742

ABD MINI 8mm Spark Plug Wires

The Original 5mm plastic plug wires just don't cut it. We offer a pure silicone 8mm replacement. Bright colored Silicone covering over steel wire coated in copper to create the highest conductivity. Available in red, yellow or blue. Specify color when ordering.

Application	Part Number
MINI Cooper	M70.7000

Supersprint Exhaust System

Supersprint is a name synonymous with quality and performance. With their latest addition for the MINI Coopers, all expectations are met. Beautiful oversized stainless steel tubing connected to a polished rear muffler. Out back you'll find a double walled, rolled edge stainless tip finishing off the excellence. Expect horsepower gains of 6-8 hp from the back half system.

MINI Cooper	83.04.04
MINI Cooper "S"	TBA

Billet Aluminum Replacement Antenna

Billet roof antenna "shorty"
TG.ASB01

Billet roof antenna w/ flex center
TG.1099

ABD Mini/PWR Cooper S Top Mount Intercooler

High efficiency intercooler replacement for Cooper S. This is a direct replacement that will increase the efficiency of your car and help it cool down in high boost situations. This is the perfect modification for cars with increased HP. This is a very simple installation that takes no more than 5 minutes with basic tools.

Mini Cooper S only	M70.INT1
--------------------	----------

ABD MINI Carbon Fiber Components

All ABD MINI carbon components are manufactured from real carbon fiber cloth, a look imitation products can not produce.

Application	Part Number
MINI Cooper (non "S")	M70.C10
2002-UP Engine cover	M70.C10
MINI Cooper (non "S")	M70.C15
2002-UP Battery cover*	M70.C15
*above part must be modified when using our upper stress bar	

Optional ECU Cover "S" Model M30.C10
Completes proper installation of upper stress bar.



ABD MINI

Stainless Steel Door Sills

Manufactured from high quality brushed stainless steel, these door sills not only look attractive but eliminate unwanted scratches on your plastic trim.

Application
MINI Cooper 2002-up

Part Number
M80.010



ABD MINI

Sway Bars

Monster Mini has developed the perfect front and rear sway bar combination. With the addition of this package your car will hug the road like never before. A stout 25mm front along with the 19mm rear is the balance needed to keep the chassis lean in your car virtually eliminated. All parts are powder coated for rust protection from road debris.

MINI Cooper 2002-up Front 25mm bar M20.025
MINI Cooper 2002-up Rear 19mm bar M20.019



Nitrous Express Nitrous Oxide Kit

Nitrous Express nitrous packages are engineered with great care in mind for both reliability and horsepower. Nitrous may not be for everyone, but if your going to use it, use a kit that has been thoroughly thought out. All nitrous express kits are semi custom applications. Some additional parts may be necessary for installation. Horsepower increase from 35-75 hp.

Application
Most 4cyl cars

Part Number
20923



ABD MINI

Upper Stress Bar

With normal driving the body of your car will flex and twist. When driving hard this situation is amplified. ABD MINI is proud to be the first to introduce an upper stress bar for the new MINI Cooper. A must for performance driving, this stress bar will reduce the flex and twist in the body of your car as you accelerate through your favorite road. (note; MINI Cooper - Must remove or modify battery cover for proper clearance. MINI Cooper "S" - Must remove or modify plastic ECU Cover, must use Monster Force Open air filter system for proper clearance.)

Application
MINI Cooper 2002 - up

Part Number
M30.010



ABD MINI

German License Plates

A nice addition to show off your cars European heritage. Choose from an authentic looking random plate or customize up to 12 characters. Frame and mounting plate included.

Application
Random German plate 90.GPL
Custom German plate 90.CPL
German plate with Red stripe 90.GPL.R
with Blue stripe 90.GPL.B

Part Number
90.GPL
90.CPL
90.GPL.R
90.GPL.B



H&R Coil Over Suspension

Fully height adjustable from a 1" to 2" reduction.

Application Part Number
MINI Cooper 50417.1
MINI Cooper "S" 50417.2



Sport Springs

ABD MINI offer's only the best in suspension options. Our spring lines include products from Europe's best with brand's like H&R and Eibach Springs. Each part number is rated perfectly for each individual vehicle model. Stiffness will increase about 20% and a lower lowered ride height of 1 - 1.5".

Application	Eibach Part	H&R Part
MINI Cooper (up to 3/02)	5701.140	50416.1
MINI Cooper (4/02-UP) incl. "S"	5702.140	50416.2

ABD MINI

Cross Drilled Brake Rotors

Cross drilled brake rotors are designed to give the MINI enthusiast the leading edge in stopping. Beginning with a.e. rotors, a race proven pattern is punched into each part. By doing this the cooling properties are greatly increased.

Application Part Number
Front cross drilled rotors DM50.011
Rear cross drilled rotors DM50.10R



*Some parts advertised may not be legal for use on public roads.





Eibach Pro-Spacers

Eibach has been a long time leader in suspension components. Now you can add yet another top quality Eibach product, Pro-Spacers. The pro-spacer kit will widen the track of your vehicle to further enhance the suspension modification while giving your car a more aggressive appearance and a more stable hold to the road. Manufactured from the highest quality aluminum, each part is perfectly matched with the proper center bore and bolt pattern. Parts are sold in pairs and measurement listed is complete axle widening. (ex; a 10mm kit consists of two 5mm spacers)

N
and cost.

Application	Part Number	Application	Part Number
All Volkswagen 4 lug (4x100mm)		Volkswagen / Audi 5 lug (5x100 & 5x112)	
10mm kit*	90.1.09.010	10mm kit*	90.1.05.006
16mm kit*	90.1.08.003	16mm kit*	90.1.08.001
30mm kit*	90.2.15.004	30mm kit*	90.2.15.005
40mm kit*	90.2.20.011	40mm kit*	90.2.20.004
50mm kit	90.3.25.001	50mm kit	90.3.25.005



Eibach Pro-Damper

Eibachs engineers took this suspension upgrade to the next level in performance and comfort. Kit includes a matched set of shocks (Damper) to work perfectly with the above Eibach springs. (sold in sets of 4)

Applications	Part Number
Audi A4 2wd (1996-99)	1531.840
Audi A4 2wd (2000-2001)	1533.840
Audi A4 Quattro (1996-99)	1534.840
Audi A4 (2000-2001) / S4 Quattro (2000-2002)	1541.840
Beetle / MK IV Golf / Jetta	1540.840
Golf / Jetta MK5 (2005-UP)	8598.840
Passat B5 Sedan	1558.840



Eibach Springs

Nearly 50 years of knowledge go into each set of Eibach sport springs / dampers. Each part is created from the highest quality German alloy wire. Cold wound on precision CNC equipment, each spring is then shot peened and finally powder coated for many years of good looks and performance reliability.

Applications	Type	Height Reduction Front / Rear	Part Number
Audi A4 Sedan 1.8T 2wd (1996-2001)	Pro kit	1.4 / 1.3	1531.140
Audi A6 Sedan 2wd (1998-up)	Pro kit	1.4 / 1.3	1559.140
Audi A6 Sedan Quattro 6cyl (1998-up)	Pro kit	1.4 / 1.3	1562.140
Audi S4 (1998-2002)	Pro kit	1.7 / 1.3	1568.140
Audi TT 2wd	Pro kit	1.1 / 1.1	1567.140
Audi TT Quattro (incl. Convrt)	Pro kit	1.1 / 1.1	1570.140
Audi TT 2wd Convrt.	Pro kit	1.1 / 1.1	1571.140
Beetle (1998-up)	Prokit	1.0 / 1.0	8567.140
Cabriolet (1980-93)	Prokit	1.2 / 1.2	8525.140
Cabriolet (1980-93)	Sportline	1.8 / 1.7	4.2585
Cabrio (1995-2001)	Prokit	1.4 / 1.2	8547.140
Carrado G60 & VR6 (1990-94)	Prokit	1.0 / 1.2	8513.140
Rabbit incl. GTI (1980-84)	Prokit	1.0 / 1.0	8510.140
Golf II 8v (1985-92)	Prokit	1.0 / 1.0	8509.140
Golf II 8v (1985-92)	Sportline	1.5 / 1.5	4.0985
Golf II 16v	Prokit	1.0 / 1.0	8519.140
Golf II 16v	Sportline	1.5 / 1.5	4.1985
Jetta II 8v (1985-92)	Prokit	1.0 / 1.0	8520.140
Jetta II 8v (1985-92)	Sportline	1.5 / 1.5	4.2085
Jetta II 16v (1987-92)	Prokit	1.0 / 1.0	8521.140
Golf III 2.0L (1993-96 VIN# <070449)	Sportline	1.6 / 1.3	8530.140
Golf III 2.0L (1993-96 VIN# <070449)	Sportline	1.9 / 1.9	4.3085
Golf III VR6 (8/1994)	Prokit	1.4 / 1.2	8531.140
Golf III VR6 9 of (1994-98)	Prokit	1.3 / 1.0	8547.140
Golf III VR6 9 of (1994-98)	Sportline	1.6 / 1.6	4.4785
Golf III 2.0L (1996-up VIN# >070450)	Prokit	1.6 / 1.6	8554.140
Golf III 2.0L (1996-up VIN# >070450)	Sportline	2.0 / 2.0	4.5485

Applications	Type	Height Reduction	Part Number
Jetta III 2.0L (1993-96; VIN# <070449)	Prokit	1.4 / 1.4	8523.140
Jetta III 2.0L (1993-96; VIN# <070449)	Sportline	1.9 / 1.9	4.2385
Jetta III 2.0L (1996-99; VIN# >070450)	Prokit	1.4 / 1.4	8552.140
Jetta III 2.0L (1996-99; VIN# >070450)	Sportline	1.8 / 1.8	4.5285
Jetta III VR6 (1994-95)	Prokit	1.3 / 1.0	8524.140
Jetta III VR6 (9/1994-98)	Prokit	1.2 / 1.2	8527.140
Jetta III VR6 (9/1994-98)	Sportline	1.6 / 1.6	4.2785
Golf IV 4cyl (1999-up)	Prokit	1.2 / 1.2	8561.140
Golf IV 4cyl (1999-up)	Sportline	1.6 / 1.6	4.6185
Golf IV VR6 (1999-up)	Prokit	1.2 / 1.2	8564.140
Golf IV VR6 (1999-up)	Sportline	1.6 / 1.6	4.6485
Golf V 5cyl (2005-UP)	Prokit	1.2 / 1.2	GV5P140
Golf V 5cyl (2005-UP)	Sportline	1.6 / 1.6	GV5S.140
Golf V 2.0T (2005-UP)	Prokit	1.2 / 1.2	GV2P140
Golf V 2.0T (2005-UP)	Sportline	1.6 / 1.6	GV2S.140
Jetta IV 4cyl (1999-up)	Prokit	1.3 / 1.3	8575.140
Jetta IV 4cyl (1999-up)	Sportline	1.6 / 1.6	4.7585
Jetta IV VR6 (1999-up)	Prokit	1.2 / 1.2	8576.140
Jetta IV VR6 (1999-up)	Sportline	1.6 / 1.6	4.7685
Jetta IV Wagon 4cyl (2001-up)	Pro kit	1.3/1.3	8577.140
Jetta IV Wagon 6cyl (2001-up)	Pro Kit	1.3/1.3	8578.140
Jetta V 5cyl (2005-UP)	Prokit	1.2 / 1.2	8598.140
Jetta V 5cyl (2005-UP)	Sportline	1.6 / 1.6	4.9885
Jetta V 2.0T (2005-UP)	Prokit	1.2 / 1.2	JV2P140
Jetta V 2.0T (2005-UP)	Sportline	1.6 / 1.6	JV2S.140
Passat B4 Sedan & Wagon VR6 (1995-97)	Prokit	1.3 / 1.0	8545.140
Passat B5 (1998-up) 6cyl exc. Wagon & 4 motion	Prokit	1.3 / 1.3	8558.140
Passat B5 (8/1998-up) 6cyl exc. Wagon & 4 motion	Prokit	1.2 / 1.2	8583.140
Passat B5 Wagon (1998-up) 6 cyl	Prokit	1.2 / 1.2	8585.140
Passat 4cyl exc. Wagon & 4 motion	Prokit	1.2 / 1.2	8557.140

Eibach Coil Over Suspension / Pro- Street

Applications	Height Reduction F/R	Part Number
Audi A4 2WD (1996-1/99)	1.2-3.0 / .8-2.5	1531.710
Audi A4 2WD (2/99-2001)	1.2-2.5 / .8-2.5	1533.710
Audi A4 1.8T Quattro (1996-2001)	1.2-3.0 / .8-2.5	534.710
Audi A4 1.8T 2WD (2002-UP)	1.2-3.0 / .8-2.5	1576.710
Audi A4 Quattro (2002-up)	1.2-3.0 / .8-2.5	1579.710
Audi TT 3.2L (2003-UP)	1.2-3.0 / .8-2.5	1567.710
Golf / Jetta MKII & III 4cyl (1985-98)	1.2-3.0 / .8-2.0	8509.710
Golf / Jetta MKIII VR6 (1994-98)	1.2-3.0 / .8-2.5	8531.710
Golf / Jetta MKIV (1999-2005)	1.6-3.0 / .8-2.5	8567.710
Golf / Jetta V (2005-UP)	1.2-3.0 / .8-2.5	8598.711
R32 GTI (2004)	1.2-3.0 / .8/2.5	1567.710
Beetle (1998-up)	1.6-3.0 / .8-2.5	8567.710

*Some parts advertised may not be legal for use on public roads.



H & R Special Springs

All H & R special springs are produced on specific precision spring coilers. H & R doesn't take any short cuts as this is why H&R is the best quality springs available. All parts are produced in Germany to strict TUV standards to further ensure that only the best materials are used in producing the parts. Pure chrome silicone wire is cold wound and then heat treated and shot peened for stress relief, then tested, washed and now finished. H&R is proud of their powder coating process, which will keep these springs looking and performing like new for many years to come. Most popular applications are listed below, call for a full list of H&R products.

Sport Springs

Applications

- Audi A4 1.8T (1996-2001)
- Audi A4 Quattro (1996-2001)
- Audi A4 2wd Avant (1998-2001)
- Audi A4 2wd (2002-up)
- Audi A4 Quattro (2002-up)
- Audi A4 Avant 2wd (2002-up)
- Audi A6 2wd (1998-up)
- Audi S4 (2000-2002)
- Audi TT 2wd (1999-up)
- Audi TT Quattro (1999-up)



Height Reduction Front / Rear	Part Number
1.3" / .5"	29989.1
1.25" / 1.0"	50396
1.4" / 1.3"	29751.2
1.5" / 1.4"	29369.2
1.7" / 1.6"	29368
1.5" / 1.4"	29369.2
1.75" / 1.5"	29793.1
1.4" / 1.3"	29477.1
1.3" / 1.2"	50312.1
1.3" / 1.2"	50312.2

- Rabbit / Scirocco 1 / Jetta I Sport
- Cabriolet (1980-93) / Scirocco II 8v Sport
- Scirocco II 16V Sport
- Rabbit / Jetta I O.E. Sport
- Golf / Jetta II 8V* Sport
- Golf / Jetta II 16V* Sport
- Golf / Jetta II 8V* O.E. Sport
- Golf / Jetta III 8V (1993-6/96) Sport
- Golf / Jetta III 8V (7/1996-98) Sport
- Golf / Jetta III VR6* Sport
- Golf / Jetta III 8V (6/1996-98) O.E. Sport
- Golf / Jetta II & III / Corrado (1985-6/96) Race
- Cabrio Sport
- Golf / Jetta IV 4cyl* Sport
- Golf / Jetta IV VR6* Sport
- Golf / Jetta IV* Race
- Golf / Jetta V (2005-UP) Coil over
- Golf V (2005-UP) Sport
- Corrado G60 Sport
- Corrado VR6 Sport
- Passat (1998-up) Sport
- Passat Wagon (1998-up) Sport
- Jetta IV Wagon 2.0L
- Jetta IV Wagon VR6, TDI & 1.8T
- Jetta V (2005-UP) Sport
- Passat W8
- Beetle Sport

1.25" / 1.25"	54740
1.25" / 1.25"	54743
1.3" / 1.25"	54708
.25" / .25"	54740.55
1.3" / 1.25"	54711*
1.3" / 1.25"	54732*
.50" / .50"	54711.55*
1.4" / 1.3"	54764
1.4" / 1.3"	54748
1.4" / 1.3"	54748*
.75" / .75"	54748.55
1.4" / 1.3"	54715.88
1.5" / 1.3"	54741
1.5" / 1.4"	29526.1*
1.5" / 1.4"	29526.2*
.80" / 2.0"	29527*
1.2-2.5/1.0-2.8	54755
1.5" / 1.4	54750
1.3" / 1.25"	54706
1.3" / 1.25"	54707
1.3" / 1.0"	54773
1.3" / 1.0"	54794
1.5" / 1.4"	29439.1
1.5" / 1.4"	29439.2
1.5" / 1.4	54751
1.3" / 1.1"	54778
1.4" / 1.2"	29489

NOTE: Golf/Jetta applications from 1999-up - The O.E. recommends replacing the "pinch bolt" when replacing the front springs. Complete your suspension with the addition of H&R shocks, ask your salesperson. Listed is only a portion of the entire line.

NOTE to all Golf / Jetta IV / Beetle owners - When lowering these cars it is recommended to change the front sway bar to ensure proper axle clearance. H & R offers a front only replacement with a higher bend and original diameter. ABD Racing offers a set of performance sway bars also with a higher bend and larger diameters. Listed below are both choices.

H & R Cup Suspension package

H&R Cup spring and shock packages are designed to offer performance reliability with an extra low drop.

Applications	height reduction Front / Rear	Part Number
Audi A4 2wd (1996-1/99)	2.1" / 1.7"	31002.1
Audi A4 2wd (2/1999-2001)	2.1" / 1.5"	31002.3
Audi A4 Avant 2wd (1996-1/99)	2.1" / 1.5"	31002.2
Audi A4 Avant 2wd (2/1999-2001)	2.1" / 1.5"	31002.4
Audi A4 2wd (2002-up)	2.0" / 1.7"	31037.1
Audi A4 Avant 2wd (2002-up)	2.0" / 1.7"	31037.2
Audi A4 Quattro (2002-up)	2.0" / 1.7"	31038.1
Audi A4 Avant Quattro (2002-up)	2.0" / 1.7"	31038.2
MK1 / Rabbit / Scirocco / Jetta I	1.5" / 1.5"	31014.1
MKII / Golf / Jetta (1985-92) / Corrado G60	2.0" / 1.7"	31015.1
MKIII / Golf / Jetta 2.0L (1993-6/96)	2.0" / 1.7"	31016.1
MKIII / Golf / Jetta 2.0L (7/1996-98)	2.0" / 1.7"	31016.2
MKIII VR6 / Golf / Jetta (1993-98)	2.0" / 1.7"	31016.3
MKIV 4cyl Beetle / Golf / Jetta	2.0" / 1.7"	31017.1
Jetta IV Wagon 2.0L	2.0" / 1.7"	31017.3
Jetta IV Wagon VR6, TDI, 1.8T	2.0" / 1.7"	31017.4

H & R Threaded Body Coil Over Suspension

Fully adjustable ride height along with a quality name you can trust. Each H&R Threaded body suspension kit is complete and assembled for an easy installation. Simply take the load off of the wheel, and spin the adjuster nut either up or down for fine tuning.

Applications	Height Reduction Front / Rear	Part Number
Audi A4 2wd (1996-01)	1.6"-2.5" / 1.3"-2.0"	29990.3
Audi A4 Quattro (1996-01)	1.6"-2.5" / 1.3"-2.0"	29591.3
Audi A4 2wd (2002-up)	1.2"-2.2" / .75"-1.7"	29358.2
Audi A4 Quattro (incl Avant)(2002-up)	1.2"-2.2" / .75"-1.7"	29363.2
Audi A6 2wd (1998-up)	1.6"-2.5" / 1.3"	29524.2
Audi A6 Quattro w/o self level (1998-up)	1.5"-2.5" / 1.25"-1.8"	29482.2
Audi S4 (2000-2002)	1.6"-2.5" / 1.3"-2.0"	29471.1
Audi TT 2wd	1.5"-2.0" / 1.5"-2.5"	29459.1
Audi TT Quattro	1.5"-2.0" / 1.5"-2.5"	29431.1
A1 Chassis All	.75"-2.0" / .75"-3.0"	29819.1
Golf / Jetta II All	.75"-2.0" / .75"-3.0"	29865.1
Golf / Jetta III / Corrado VR6	.75"-2.0" / .75"-3.0"	29865.4
Golf / Jetta IV 4cyl	1.8"-3.5" / 1.8"-3.5"	29525.1
Golf / Jetta IV VR6	1.8"-3.5" / 1.8"-3.5"	29525.2
Golf/Jetta V (2005-Up)	1.2"-2.5" / 1.0"-2.8"	54755
Corrado G60	.75"-2.0" / .75"-3.0"	29810.1
Jetta IV Wagon 2.0L	1.5"-2.8" / 1.3"-2.3"	29423.1
Jetta IV Wagon VR6, TDI & 1.8T	1.5"-2.8" / 1.3"-2.3"	29423.2
Beetle	.75"-2.0" / .75"-3.0"	29488.1
Passat (1998-up)	1.8"-3.2" / 1.0"-1.8"	29516.1

*** PCS coil over kits are available with adjustable dampening. Call for applications/price***
H & R Ultra Low systems also available with a reduction up to 5.0" Crazy, but we can get them.



*Some parts advertised may not be legal for use on public roads.



H&R Precision Wheel Spacers

Give your car even a more aggressive look by filling up the wheel wells with a set of H & R hub centric spacers. Also a good cure for clearance problems due to improper off set wheels. Narrow spacers re-use original lug bolts while the wider kit's utilize longer lug bolts to ensure safety. If using larger than a 10mm kit, please order lug bolts at the same time as your spacer purchase.

Applications	Part Number	Part Number
All Audi & Volkswagen	4 -lug	5 -lug
10mm	10234571	10255570
16mm	16234571	16255571
30mm	30234571	30255571
40mm	40234571	40255571



Triple "C" Camber Adjusters

Allows camber to be adjusted either negative or positive.

Description	Part Number
12mm diameter bolt pair	TC112
*** Other sizes available ***	

Sway Bars

Description	Part Number
H & R Front Sway Bar - Golf / Jetta IV / Beetle 22mm	900.525.01
ABD Racing Front Sway Bar - Golf / Jetta IV / Beetle 25mm	20.325
ABD Racing Rear Sway Bar - Golf / Jetta IV / Beetle 28mm	20.328

Threaded Body Coil Over Wrenches

Application	Size	Part Number
Fits small locknut	68-75mm	860.6875.01
Fits larger spring perch nut	80-90mm	860.8090.01



Suspension Techniques Sport Springs

All Suspension Techniques products are designed to maximize your car's performance without the sacrifice lesser manufacturers have. These sport springs will benefit your car in both improved looks in addition to superior handling all while maintaining a positive comfortable ride. Each spring is thoroughly powder coated to keep it's looks over the years. All Suspension Techniques sport springs will lower your application approximately 1".

Applications	Part Number
Rabbit / Scirocco I (1975-79 large spring cap)	60415
Rabbit / Cabriolet / Scirocco / Jetta I	60425
Golf / Jetta II	60430
Golf / Jetta III 4cyl (1993-6/96)	60430
Golf / Jetta IV (1999-up)	TBA
Beetle (1998-up)	TBA
Corrado G60 / VR6	60435



SPEEDTECH Performance Springs

Speedtech is the perfect coil to fill the gap between an average sport spring and full on race units. Speedtech is approx. 50lbs. per coil stiffer than a comparable sport spring and about 10mm lower, but maintains a quality ride utilizing a full progressive rating. Powder coated in a brilliant silver for the latest hi-tech look.

Applications	Part Number
Rabbit / Cabriolet / Scirocco / Jetta I	63035
Golf / Jetta II	63040
Golf / Jetta III 4cyl (1993-6/96)	63040
Golf / Jetta IV (1999-up)	TBA
Beetle (1998-up)	TBA

Replacement Upper Strut Bearings

A must when replacing springs/shocks. Probably the most overlooked replacement wear part on your car, the upper strut mount/bearing is the pivot point for your front suspension as well as the steering.

Applications	Part Number
Rabbit / Cabriolet / Scirocco / Jetta I	175412329A
Golf / Jetta II (all) Golf / Jetta III (1993-6/96)	176412329
Corrado G60 / Passat 16v	357412329
Fox	ZBA412351
VR6 Conversion Kit	357412331KIT
(SEPARATE VR6 PARTS ALSO AVAILABLE)	

*Some parts advertised may not be legal for use on public roads.



Bilstein Shocks

Based in Germany, Bilstein was the first company to produce Gas Pressured shock absorbers. In fact to this day Bilstein still uses a mono tube style design that is unique to only their products (patented). The Bilstein ride quality and performance level is unsurpassed, many have tried to gain the same qualities but never to achieve the same results. Each part is pre-tested before packaged to ensure the highest quality for the consumer. We offer three different levels of Bilstein shocks; the HD (Heavy Duty), Sport, and the Rallye/Race, each component having it's purpose. The HD is a great replacement shock for someone wanting a more positive ride and better performance while the Sport is the next level up. With its shortened center shaft, the Sport is created for the person who has lowered their car and demands a dampener that will handle this lower stance. Next in line are the Race series and the name says it all. Very aggressive valving along with shortened center shafts, the Race series shocks are for that, Race use only.

Applications		HD	Sport	Race
Audi A4 (1996-2000)	Front	B36.2081	P36.2081	
	Rear	B36.2080	B36.2082	
Audi A4 Quattro (1996-2000)	Front		B36.2081	
	Rear		BE3.2669	
Beetle / Golf / Jetta IV	Front	VE3.4407	YE3.4408	
	Rear	BE3.2543	BE3.2544	
Corrado G60	Front	V36.0214	V36.0366	VE3.4141
	Rear	B36.1417	B36.2246	AK.40130
Corrado VR6	Front	V36.4023	V36.4024	VE3.4141
	Rear	B36.1524	B36.1529	AK.30140
Fox	Front	P30.0014	B36.0030	
Golf / Jetta III 4cyl	Front	V36.0372	Y36.0373	VE3.4141
	Rear	B36.1524	B36.1529	AK.30140
Golf / Jetta III VR6 (1994-95)	Front		VN3.4172	
	Rear		B36.1529	
Golf / Jetta III VR6 (1996-98)	Front	V36.4023	V36.4024	
	Rear	B36.1524	B36.1529	
Golf / Jetta II	Front	P30.0102	V36.0104	VE3.4141
	Rear	B36.0654	B36.0656	AK.30140
Cabriolet (all)				
Rabbit (all)	Front	P30.0137	P30.0032	V36.0059
Rabbit GT I	Rear	B46.0921	B46.0657	B46.0657
Jetta I (all)				
Scirocco (all)				
Passat (1990-97) 4cyl	Front	V36.0406		
	Rear	B36.1597		
Passat VR6 (1993-97)	Front	VN3.4277P	VN3.4172P	
	Rear	B36.1597	B36.1597	
Passat (1998-up)	Front	B36.2079	B36.2081	
	Rear	BE3.2532	BE3.2533	



Tokico Gas Shocks

With over 50 years of experience building hydraulic components, Tokico is no stranger to producing quality. Being one of the world's largest manufacturers of shock absorbers, they have created the proper vehicle control along with excellent ride quality. Doing so by their unique twin tube design and low-pressure gas enriched system. So whether you choose the high performance H/P model or the race ready 5-way adjustable Illumina, we at Autobahn Designs know you'll be ecstatic over the aggressive level your car can achieve.

Applications		H/P	ILLUMINA
Rabbit / Cabriolet / Scirocco / Jetta I	Front	HZ.1073	BZ.1073
	Rear	HU.2645	BU.2645
Corrado G60 / Golf / Jetta II (1985-92 w/o sealed strut)	Front	HZ.1093	BZ.1093
	Rear	HU.2769	BU.2769
Golf / Jetta III	Front	HZ.2185	BZ.2185
	Rear	HU.2769	BU.2769
Beetle / Golf / Jetta MKIV	Front	HB.3183	BB.3183
	Rear	HE.3568	BE.3568



Boge Turbo Gas Shocks

Boge has been a premiere shock manufacturer throughout the world for over 60 years. With its high pressure mono tube designs, the Boge program is a great performer with great ride quality and all done without braking your bank account. Boge gas shocks are a great original equipment upgrade or a mild performance upgrade for the budget minded. These units work well with original springs or conservative sport spring combinations.

Applications		Part Number
Rabbit / Scirocco / Jetta I (all)	front	27.229F
	Rear	27.833F
Golf / Jetta II	front	27.467F
	Sealed struts / front	27.A58F
	Rear	27.528F
Golf / Jetta III 4cyl	front	27.A58F
	Rear	27.528F
Golf III VR6	front	32.A69
	Rear	27.528F
Jetta III VR6 (1994-95)	front	32.A75F
	Rear	27.528F
Jetta III VR6 (1996-98)	front	32.A69F
	Rear	27.528F
Passat 4cyl (1990-92)	front	32.A70F
	Rear	27.982F
Passat 4cyl (1993-97)	front	32.A75F
	Rear	27.982F
Passat VR6 (1993-97)	front	32.A75F
	Rear	27.982F
Passat (1998-up)		TBA
Beetle / Golf / Jetta IV (1998-up)		TBA



*Some parts advertised may not be legal for use on public roads.





Brospeed Exhaust Systems

As an original equipment manufacturer, Bosal is a company long acquainted with Volkswagen tuning. Over the years they have produced many of the standard exhausts that are found on many makes and models of vehicles. After creating these standard equipment systems it was due time for a performance exhaust to be produced with the same confidence as the original parts. Enter the Brospeed program, a true performer manufactured by Bosal with horsepower gains, sport sound, and good looks to be gained.

Applications	Part Number
Rabbit / Cabriolet (1983-84)	248.774
Golf II 8V GTI (1988-92)	248.776
GTI 16V (1987-92)	248.777
Golf III 4cyl (1993-94)	248.779
GTI VR6 (1995)	112.701
GTI VR6 (1996-98)	112.705
Jetta II 8V & 16V (1990.5-92)	248.781
Jetta III 4cyl (1993-94)	248.782
Jetta III VR6 (1994-95)	112.702
Jetta III VR6 (1996-98)	112.706
Corrado G60	248.783



Brospeed stainless steel 60mm systems

These systems are manufactured from 304 stainless steel for durability, with rear muffler and tips fully polished.

Applications	Tip Style	Part Number
Beetle / Golf IV 2.0L	Dual DTM	112.753
Beetle / Golf IV 2.0L	Dual Round	112.752
Jetta IV 2.0L	Dual DTM	112.755
Jetta IV 2.0L	Dual Round	112.754
Beetle / Golf IV VR6 & 1.8T	Dual DTM	112.751
Beetle / Golf IV VR6 & 1.8T	Dual Round	112.750
Jetta IV VR6 & 1.8T	Dual DTM	112.757
Jetta IV VR6 & 1.8T	Dual Round	112.756

Brospeed Pro Sport Mufflers

Designed for universal application, brospeed stainless steel mufflers feature 2-1/4 inch inlet. Tig welded from T.304 stainless steel their mirror polish finish and wide diameter tips give pro sport the look of performance

Applications	Tip Style	Part Number
Universal	Single Round	247.210
Universal	Single DTM	247.212
Universal	Dual Round	247.211



*Some parts advertised may not be legal for use on public roads.



Supersprint High Performance Exhaust Systems

Without a doubt one of the premiere exhaust available in t applications available to ensure a direct fit every time. Many so-called exhausts are assembled under strict standards utilizing great advances in technology. It's free flow silencer allows the escaping gases to exit via the y-shaped inner tube freely. In addition to this great feature one must also know that Supersprint has gone to all leng enough to allow a nice sound out and keep the performance to a maximum. Wrapped around these tubes is a combination of long lasting stainless steel /rock wool insulation, a combination we have not seen on other systems and surely will out last any. The out back . If it's performance and beauty you seek, look no further as this is the system for your car.

(Only a partial list is shown below, call for further applications)

Applications	Part & Tip Style/Size	Part Number	Applications	Part & Tip Style/Size	Part Number
Audi A4 1.8T 2wd/Manual trans (1996-2000)	Center Section w/Resonator	76.10.03	Golf / Beetle / Jetta MKIV (1999-up) 1.8T / VR6	Golf / Beetle / Jetta Center Section	91.19.13
	Rear Silencer Dual 90mm	76.10.26		Golf / Beetle Rear Silencer Dual 90mm	76.24.26
	Rear Silencer Dual 95 x 75	76.10.08		Golf / Beetle Rear Silencer Dual 95 x 75	76.24.28
	Stainless Rear Silencer Dual 90 x 70	76.10.07		Golf / Beetle Stainless Rear Silencer Dual 95 x 80	76.24.68
	Stainless Rear Silencer Dual 95 x 80	76.10.68		Golf / Beetle Stainless Rear Silencer "Viper"	76.24.68
	63.5mm (2.5") Stainless Center Section	32.49.13		Jetta Rear Silencer Dual 95 x 75	91.21.08
Audi A4 Quattro (1996-2000)	63.5mm (2.5") Stainless Rear Silencer Dual 90 x 70	32.49.07	Jetta Stainless Rear Silencer Dual 95 x 80	91.21.68	
	Center Section w/Resonator	76.14.03	63.5mm (2.5") Golf / Beetle / Jetta Stainless Center Section	32.45.13	
	Rear Silencer Dual 90mm	76.14.26	63.5mm (2.5") Golf / Beetle Stainless Rear Silencer Dual DTM	32.48.68	
	Stainless Rear Silencer Dual "RS" 90 x 70	76.14.07	63.5mm (2.5") Jetta Stainless Rear Silencer Dual 95 x 80	32.48.68	
Audi A4 2wd 1.8T (2002-up)	Stainless Rear Silencer "Viper" 185 x 70	76.14.67	R32 GTI	32.R32	
	Stainless Center Section w/Resonator	76.36.03	Passat 16v (1990-94)	Front Muffler	88.26.02
	Stainless Right Rear Silencer 90mm	76.36.04	Central Muffler	8.46.03	
Audi A4 2wd 3.0L (2002-up)	Stainless Left Rear Silencer 90mm	76.36.34	Rear Silencer Dual 63mm	88.46.06	
	Stainless Right Rear Silencer 90mm	76.36.04	Passat 1.8 T (1998-up)	Central Muffler	88.72.03
Audi A4 Quattro 1.8T & 3.0L (2002-up)	Stainless Left Rear Silencer 90mm	76.36.34	Rear Silencer Dual 95x75mm	88.72.08	
	Front Connecting Pipe 1.8T	76.39.12	Passat B5 & 5.5 (1998-up) 63.5mm (2.5") Jetta Stainless Rear Silencer Dual 95 x 80	32.51.07	
Audi S4 (1997-2002)	Front Connecting Pipe 3.0L	76.35.22			
	Stainless Rear Silencer w/Resonators	76.35.03			
	Stainless Right Rear Silencer 90mm	76.39.04			
	Stainless Left Rear Silencer 90mm	76.39.34			
Audi S4 (2003-up)	70mm Stainless Center Section	76.25.03			
	70mm Stainless Rear Silencer Dual 90mm	76.25.26			
	70mm Stainless Rear Silencer Dual 90 x 70 CALL	76.25.07			
Audi TT 2wd 180hp	Stainless Center Section	76.25.03			
Audi TT Quattro	Stainless Rear Muffler Single 120 x 80	76.21.05			
	63.5mm (2.5") Stainless Center Section	32.47.13			
	63.5mm (2.5") Stainless Rear Muffler Single 120 x 80	32.47.05			
	Stainless Center Section	76.26.13			
Golf / Jetta III 4cyl	Stainless Rear Muffler (w/o tip)	76.26.04			
	Stainless Single 120 x 80	76.32.15			
	Stainless Dual Exhaust Style 120 x 80	76.27.15			
	Central Muffler	88.56.03			
	Golf Rear Silencer Dual 76mm	88.51.06			
	Golf Rear Silencer Dual DTM	88.51.66			
Golf / Jetta III VR6	Golf Rear Silencer Dual 95 x 75	88.51.08			
	Golf Rear Silencer Dual 90mm	88.51.26			
	Golf Stainless Rear Silencer 145 x 75	88.51.59			
	Golf Stainless Rear Silencer "Viper" 185 x 70	88.51.67			
	Jetta Rear Silencer Dual 76mm	88.63.06			
	Central Muffler	88.57.03			
Golf / Beetle 2.0L / Jetta IV 2.0L	Front Connecting Pipe	32.32.02			
	Golf Rear Silencer Dual DTM	88.57.66			
	Golf Rear Silencer Dual 95 x 75 mm	88.57.08			
	Golf Stainless Rear Silencer 145 x 75	88.57.09			
	Jetta Rear Silencer Dual 90x70mm	88.64.07			
	Jetta Stainless Rear Silencer 145 x 75	88.64.09			
	Central Muffler	76.17.03			
	Golf Rear Silencer Dual 90mm	76.12.26			
Golf Rear Silencer Dual 70mm	76.12.66				
Golf Rear Silencer Dual 95x75mm	76.12.08				
Jetta Rear Silencer Dual 90mm	91.20.08				



*Some parts advertised may not be legal for use on public roads.



Techtonics Tuning Exhaust Systems

Techtonics is a name that is purely synonymous with horsepower, and all Techtonics exhausts are no exception. Constructed of mandrel bent tubing, these exhausts are a great value for our performance minded customers seeking a boost in horsepower. All Techtonics systems are Dyno tested for proven gains as well as jig tested for a nice fit and easy installation every time. Techtonics offers a very extensive line with a wide variety of options for virtually every application. All systems are available in optional Stainless Steel Construction as well as many different muffler choices. Listed below are cat-back systems and these are only a few of the exhausts we offer, please call for further assistance.

Aluminized systems

Applications	Part Number
Rabbit / Scirocco /Cabriolet (1975-84)	251.307
Pickup	251.308
Jetta I	251.309
Scirocco II 16V	253.327
Golf (1985-up) w/46mm Cat. Outlet	253.409
GTI 8V (1985-89) w/50mm Cat. Outlet	253.410
GTI 16V	253.411
Jetta II (1985-up) w/ 50mm Cat. Outlet	253.412
Jetta II GLI (1987-89) w/55mm Cat Outlet	253.413
Jetta II (1990-92) w/ 50mm Cat. Outlet	253.414
Passat 16v	253.415
Passat GLX VR6 (1993-94)	253.416
Passat GLX VR6 (1995-97)	253.417
Passat 1.8T	253.418
Golf III 4cyl (1993-2/96)	253.420
Golf III 4cyl (3/1996-98)	253.421
Golf MKV (2005-Up)	253.560
Jetta III 4cyl (1993-2/96)	253.430
Jetta III 4cyl (3/1996-98)	253.431
GTI VR6	253.440
Jetta III VR6 GLX	253.450
Beetle	253.435
Beetle / Golf IV 1.8T & VR6	253.460
Jetta IV 2.0L	253.436
Jetta IV VR6 & 1.8T	253.464

Stainless Steel Systems

Applications	Part Number
Rabbit / Scirocco /Cabriolet (1975-84)	252.307
Pickup	252.308
Jetta I	252.309
Rabbit/ Scirocco with 16v engine conversion	252.326
Scirocco II 16V	252.327
Golf (1985-up) w/46mm Cat. Outlet	252.409
GTI 8V (1985-89) W/50mm cat. Outlet	252.410
GTI 16V	252.411
Jetta II (1985-up) W/ 50mm cat. outlet	252.412
Jetta II GLI (1987-89) W/55mm cat outlet	252.413
Jetta II (1990-92) W/ 50mm cat. outlet	252.414
Passat 16v	252.415
Passat 1.8T	252.418
Golf III 4cyl (1993-2/96)	252.420
Golf III 4cyl (3/1996-98)	252.421
Golf MKV (2005-Up)	252.560
Jetta III 4cyl (1993-2/96)	252.430
Jetta III 4cyl (3/1996-98)	252.431
GTI VR6	252.440
Jetta III VR6 GLX	252.450
Beetle / Golf IV 2.0L	252.435
Beetle / Golf IV 1.8T & VR6	252.460
Jetta IV 2.0L	252.436
Jetta IV VR6 & 1.8T	252.464
Jetta MKV (2005-Up)	252.560
GTI R32	252.470
Jetta 2.5L / Dual tip	252.530D
Jetta 2.0L FSi / Dual tip	52.530D
GTI / Golf 2.0L FSi / Dual tip	252.526D

Headers, Downpipes and Exhaust Manifolds

Application	Description	Manufacturer	Part Number
Rabbit (1983-84)	Header	Brospeed	999.774
Golf / Jetta II 8V	Header	Brospeed	999.776
Golf / Jetta II 16V	Header	Brospeed	999.777
Golf / Jetta III 8V (1993-96)	Header	Brospeed	999.776
Golf / Jetta III VR6	Header	Brospeed	111.750
Corrado G60	Header	Brospeed	999.778
Rabbit / Scirocco 8v / Jetta I	Header	Supersprint	88.02.10
Golf / Jetta II 8V	Header	Supersprint	88.59.01
Golf / Jetta II 16V	Header	Supersprint	88.62.01
Corrado G60	Header	Supersprint	88.59.01
Corrado / Golf / Jetta III VR6	Header	Supersprint	88.57.01
Rabbit / Scirocco 8v / Jetta I	Euro Downpipe	Techtonics	251.215
Rabbit / Scirocco 8v / Jetta I	Euro Exhaust Manifold	O.E.	251.100
Rabbit / Scirocco 8V / Jetta I	Dual Downpipe	Techtonics	251.205
Golf / Jetta II 8V	Dual Exhaust Manifold	O.E.	251.101
Golf / Jetta II 8V	Dual Downpipe	Techtonics	251.117
Beetle / Golf / Jetta 1.8T	2.5" Downpipe w/ cat.	Techtonics	251.234
Passat 1.8T	2.5" Downpipe w/o cat.	Techtonics	251.233
Golf/GTI/Jetta/ Audi A3 2.0L FSi	2.5" downpipe w/ cat.	Techtonics	253.560

Exhaust Parts & Accessories

A1 & A2 16V	Flex Coupling Repair Kit	Techtonics	253.001
All 8v cars	Exhaust Gaskets (head/manifold)		253.100
All 16v cars	Exhaust Gaskets (head/manifold)		253.102
Exhaust Hanger w/ Chain for A1 & A2 chassis			70.000
Exhaust Hanger Golf / Jetta III (all)			253.146



*Some parts advertised may not be legal for use on public roads.



PHOTO SUPPLIED BY NEUSPEED

Sport Camshafts

Usually following an exhaust modification, a sport camshaft upgrade will be next in order. We offer a large variety of durations to accommodate any driving style or powerband desired. Most upgrades will increase the mid-range and top end pulling power as well as a nice horsepower jump.

Applications

Cars with solid lifters

- European G11 G-grind (283 dur. 423 lift).
- HOR Technologie Sport (286 dur. 436 lift)
- Neuspeed (272 dur. 432. Lift)
- Schrick Sport 276
- Schrick Sport 288

Part Number

- 10.109.423
- 10.109.01.102
- 3.60.10.81
- 014.01.760.00
- 014.01.880.02

Cars with hydraulic lifters

- HOR Technologie Sport Hydro (260 dur. 421 lift)
- HOR Technologie Sport Hydro (270 dur. 449 lift)
- Neuspeed 256 (Beetle / Golf / Jetta / MKIV 2.0L)
- Schrick 1.8T (252)
- Schrick 1.8T (260)
- Schrick Sport 268
- Schrick Sport 272

- 10.109.420
- 10.109.10.109
- 3.60.10.93
- 301.E1.521.00
- 301.A1.601.00
- 014.01.681.01
- 014.01.721.02

16 Valve Cars

- Schrick Sport 260 pair
- Schrick Sport 268 pair
- Schrick Sport 276 pair
- European Intake Camshaft (258 dur. .378 lift)
- AST Sport 260 pair

- 22.E/A1601.02
- 22.A/E1681.01
- 22A/E1761.01
- 10.109.416
- 10.109.418K

VR6 Cars

- Neuspeed 260" pair
- Neuspeed 268" pair
- Schrick Sport 268" pair

- 3.60.10.51
- 3.60.10.52
- 268.R/L1681.00



Heavy Duty Valve Springs and Replacement Hydro Lifters

- | | |
|--|---------------|
| Hydraulic lifters (each) | 034.109.309AD |
| AST Sport Valve Spring Set 8v | 10.109.600 |
| AST Sport Valve Spring Set 16v | 10.109602K |
| AST Sport Valve Spring Set VR6 | 10.109.604K |
| Eibach Valve Spring Kit - all 8 valve | 20406.208 |
| Eibach Valve Spring Kit - all 16 valve | 20406.216 |
| Eibach Valve Spring Kit - all 12 valve VR6 | 20406.212 |
- Call for replacement valves and retainers.



Adjustable Cam Sprocket

Our adjustable cam sprocket will enable you to perfectly dial in your cam timing. With adjustment up to 4-degrees either to advance or retard, one can now make a vehicle perform exactly how you want.

Applications

- 8V Cars
- 16V Cars
- 2.0L Beetle / Golf / Jetta IV

Part Number

- ZVW.109.500.70
- ZVW.109.500.80
- 62.10.22



Schrick High Performance Intake Manifold for VR6

With increased and variable air flow into your intake system, the Schrick intake manifold system is an outstanding addition to your VR6. Dyno test prove that this unit will increase horsepower as well as torque throughout the entire powerband. A sport computer chip is recommended for this upgrade to ensure proper fuel richness.

Applications

- 1992-95 VR6 OBD1 Cars
- 1996-98 VR6 OBD2 Cars

Part Number

- 268.16.020.00
- 268.160.20.01

Recommended Replacement Parts

- | | |
|--|--------------|
| Cam seal | 068103085A |
| 8V Timing Belt | 056109119A |
| 16V Timing Belt | 027109119A |
| All 2.0L Timing Belt | 037109119C |
| 8V Belt Tensionor | 0211092436 |
| 16V Belt Tensionor | 051109843 |
| 8V Upper Cam Saver | 026103547 |
| 8V Valve Cover Gasket Set | 056198025A |
| 16V Valve Cover Gasket Set | 027198025 |
| Corrado G60 Valve Cover Gasket | 037.103.483C |
| Golf / Jetta III 4cyl Valve Cover Gasket | 051.103.483A |

*Some parts advertised may not be legal for use on public roads.



K & N Air Filters

Sup products and outer layer so the airflow is increased over original equipment filters. When the filter becomes dirty, simply spray some K & N cleaner on, wash thoroughly, let dry and spray K & N oil, never needing to be replaced.

Applications	Part Number
Rabbit / Scirocco / Jetta I	33.2002
Golf / Jetta II 8V (1985-87); 16V (1987-89)	33.2001
Golf / Jetta II 8V (1988-92); 16V (1990-92)	33.2029
Golf / Jetta III (ALL)	33.2069
Corrado G60	33.2029
Corrado VR6	33.2029
Passat 1.8T (1998-up)	33.2125
Beetle / Golf / Jetta IV	33.2128
K & N Filter Care Kit (spray oil & cleaner)	99.5000
K & N Spray Oil	99.0504
K & N Filter Cleaner	99.0621



Amsoil Synthetic Lubricants

Amsoil was the first to introduce synthetic lubricants and simply the best. Perfect for performance driving situations, this oil offers zero breakdown during extreme temperatures. Amsoil has been extensively tested and proven to reduce engine drag therefore reducing increasing horsepower and achieving high RPM levels easier.

Availability	Part Number
Per quart;	
10w-40w Motor Oil	70.QAM
20w-50w Racing Motor Oil	70.QRO
20W-50w Series 2000 Racing Motor Oil	70.2QR0
75w-90w Gear Oil	70.QGR
Per case (12 quarts);	
10w-40w Motor Oil	70.AMO
20w-50w Racing Motor Oil	70.ARO
20w-50w Series 2000 Racing Motor Oil	70.2ARO
75w-90w Gear Oil	70.AGR



External Mount Oil Cooler kits

Most of the late model cars come with a factory equipped oil cooler and this usually does a great job. But in extreme conditions an external mount cooled system may be wanted. These kits are prepared with everything you will need for an easy installation. Two options are listed, one being supplied with the standard sandwich plate adapter and the other includes the bolt on Euro GTI thermostat adapter. (Braided hose available on request)

Applications	Part Number
4 cyl. Oil cooler kit /Sandwich plate	10.117.399K
4cyl Oil cooler kit /Euro Adapter	10.117.899.K
VR6 oil cooler kit /Sandwich plate	10.117.599K

Heavy Duty / High Volume Oil Pumps

Solid Lifter cars	027.115.105
Replacement for Hydraulic lifter cars	

Oil Filters, Pan Gaskets and Accessories

Oil Filter All 4cyl	056115561G
Oil Filter Corrado G60	037115561
Oil Filter VR6 (1992-96)	021115562
Oil Filter VR6 (1996-up)	72197
Oil Pan Gasket 4cyl	053.103.609
Dipstick tube (top/plastic)	053.103.663



Oil Pans and Windage tray

Replacement oil pan 5-quart 4cyl	049.103.601
Aluminum Baffled Oil Pan 5-quart 4cyl	3.90.10.01
VW Motorsport style aluminum Windage tray 4cyl	037.113.220



*Some parts advertised may not be legal for use on public roads.



GIAC Software Upgrades

GIAC has become the standard of the industry in performance computer upgrades (chip). This is the best upgrade for the buck with up to 80 hp gains from this alone. Each program is custom tailored per application as no two ECUs are alike. Both smooth power gains and higher RPM ranges are achieved when adding the chip to your vehicle.

Application	HP Gain / ft. lbs Torque	Part Number
All 1.8t vehicles	30-50 / 35-75	70.GIAC.18T
All 2.7	70-80 / 80-90	70.GIAC.2.7
RS6	65-70 / 100-110	70.GIAC.RS6
All VR6 vehicles	8-12 / 8-12	70.GIAC.4VR6



ABD Racing Split Second Electronic Boost Controller

Finally a true 1.8T ECU upgrade you can do on your own. Split Second Boost Controller is a great alternative to the traditional chip upgrade. One big advantage is you now have the ability to adjust how much boost you want to run. Adjustable from stock to 14.5 psi.

Application	Part Number
1.8T Cars 1999-up (Audi / Volkswagen)	1.8TBSC



Nitrous Express Intercooler Halo Kit

This complete package will force cold nitrous or CO2 onto the surface of the intercooler. By doing so, intake temperatures are dramatically reduced.

Applications	Part Number
O.E. Intercooler w/ 5lb. bottle	2000.05.OE
Front Mount Intercooler (ABD or other)	2000.05



Nitrous Express Remote Bottle Opener

With the push of a button you are able to open and close your nitrous bottle.

Description	Part Number
Remote Bottle Opener	11107



Nitrous Express Nitrous Oxide Kits and Accessories

Nitrous Oxide may not be for everyone but if you insist use a kit that has been engineered for your car. Nitrous Express kits are just that, each kit is manufactured per application and done well. Very easy installation for a quick boost of horsepower like no other improvement can provide. Nitrous Express has developed their own fogger nozzle system that simply out performs the competition. The main difference is in the transition, you feel the exchange of Nitrous, of course except for the boost in horsepower. So many other brands though are extremely harsh in this aspect. Great engineering and good quality parts are all together in a Nitrous Express package.

Applications	Part Number
NXS EFI Single Nozzle Kit (35/50/75hp)	20923



*Some parts advertised may not be legal for use on public roads.



Robert Bentley Service Manuals

The same company that makes the books for the Factory VW Technicians. A must have for the do-it-yourselfer.

Description	Part Number
Audi A4 (1996–2001)	AU.800.0704
Audi A4 (1996–2001) CD	AU.805.4000
Cabriolet / Scirocco II 8 & 16V	70.VS93
Corrado G60 & VR6	70.VC93
GTI / Golf / Jetta II 8 & 16V	70.VG92
Golf / Jetta III 4 & 6 cyl	70.VG97
Fox	70.VF93
Passat 16v (1990–94)	70.VP92
Passat (1995–97) 2-volume set	70.VP97



Description	Part Number
Rabbit / Scirocco I (1975–79)	70.VRG9
Rabbit / GTI / Scirocco / Jetta I (1980–84)	70.VRG4
Beetle (1998–up) manual	70.VB99
Beetle (1998–up) manual-CD	EVNB
Golf/Jetta IV (1999–up)	70.VG00

Low Temperature Thermostats

On those hot days or just plain sitting in traffic, the stock 195° thermostat seems to be just a bit too high to keep your car at a desirable temperature. We offer a couple of different alternatives starting with the 176°F or the super low temp of 160°F, either work great when driving in extreme conditions. These thermostats along with the use of a low-temp fan switch keep your car at a desirable temp when it counts the most.

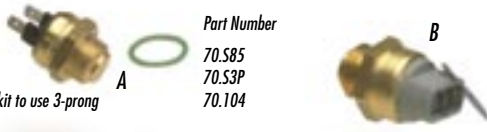
Availability	Part Number
160° thermostat	70.071
176° thermostat	70.080
160° VR6 thermostat	70.4123



Low Temperature Fan Switch

Once installed this switch will turn your radiator fan on sooner at a new lower temperature and keep the fan running longer to ensure your car cools properly.

Availability	Part Number
(A) 2-prong (180°)	70.S85
(B) 3-Prong (185–199°)	70.S3P
Golf / Jetta III & IV Conversion kit to use 3-prong	70.104



Bosch Distributor Cap & Rotor

We carry the complete line of Bosch products. Below we have listed the most popular applications, for further assistance feel free to call.

Applications	Distributor Cap	Rotor
A1 Chassis cars up to 6/1984	03010	04038
4cyl Cars 7/1984–up)	03212	04038
4cyl Cars (7/1984–up) with Shield	03214	04170
2.0L 8V (1993–up)	03368	04170
VR6 (1992–93)	03369	04223



BOSCH Spark Plugs

Bosch is the true Original Equipment parts that reach the highest standards of many of the top Automakers. A name that is purely synonymous with quality, Bosch is a true performer that you can rely on to be there when things count. We offer a few of the different types of Bosch plugs manufactured and listed below are the most popular applications. Check all plug gaps before installing, as they can change during shipping.

Applications	Super	Quad Ground Platinum
ALL 8V (except 2.0L MKIII / MKIV)	W7DTC	4477
16V Cars	4418	
2.0L 8V (1993–up)	4418	
VR6 Cars	4418	



BERU Silverstone & Ultra H/P Spark Plugs

Beru is a name long associated with performance and their spark plug line is no exception. Whether it be the Stealth looking Silverstone or the Silver electrode coated Silverstone, you can be sure you're installing top notch parts that cannot be duplicated by lesser brands.

Applications	Silverstone	Ultra H/P
All 8V A1 & A2 Chassis	S5	7DU
All 16V A1 & A2 Chassis S3F	6DTU	
All Golf / Jetta III 4 & 6 Cyl	S3F	6DTU
Corrado G60	6DPO	



Silverstone Shown

Quaife Differentials

The Quaife is a limited slip differential that will keep the power to both front wheels during hard cornering or bad weather. Quaife is the strongest replacement differential available and proven so by the many winning race and Rallye cars that use the product. If traction is a problem then Quaife is the answer.

Applications	Part Number
O2O Transmission (A1, A2 SOLID SHIFT LINKAGE)	10.309.150
O2A Transmission Beetle / Golf / Jetta IV (O2J Transmission)	10.309.160
Passat (1998–up)	10.309.180
	10.309.170



*Some parts advertised may not be legal for use on public roads.



Sachs Clutch Products

We offer Sachs clutch components for one simple reason, quality. When you purchase a genuine Sachs product you're buying the highest standard available. So whether you choose a stock replacement or a sport package you'll feel confident while pushing your car to the limits with Sachs keeping the power to the ground.

Listed below are clutch kits, call for separate component pricing.

Application	Flywheel Size	Style	Part Number
MKI Chassis 1975-82 (Rabbit etc...)	190mm	replacement	70.149
MKI Chassis 1981-84 (Rabbit etc...)	200mm	replacement	70.349
MKI & II Chassis 8v 1983-92 (Rabbit GTI, Golf, Jetta)	210mm	replacement	70.449
MKI & II Chassis 16v (Scirocco / Golf / Jetta)	210mm	replacement	70.469
MKIII Chassis 2.0L (Golf / Jetta) 1993-1/94	210mm	replacement	70.469
MKIII Chassis 2.0 (Golf / Jetta) 2/1994-98	210mm	replacement	70.471
MKIII Chassis VR6 (GTI / Jetta / Corrado VR6)	228mm	replacement	70.510
MKIV Chassis 2.0L (Beetle / Golf / Jetta)	215mm	replacement	70.491
MKIV Chassis 1.8T 5-sp (Beetle / GTI / Jetta)	220mm	replacement	70.499
MKIV Chassis VR6 5-sp (GTI / Jetta)	228mm	replacement	70.530
Corrado G60 / Passat 4cyl (1990-97)	228mm	replacement	70.509
Passat B5 1.8T (1998-up)	228mm	replacement	70.539

SACHS Sport Clutch Packages

Application	Flywheel Size	Style	Part Number
MKI Chassis 1975-82 (Rabbit etc...)	190mm	Sport	70.159
MKI Chassis 1981-84 (Rabbit etc...)	200mm	Sport	70.359
MKI&II Chassis 8v 1983-92 (Rabbit GTI, Golf, Jetta)	210mm	Sport	70.459
MKI&II Chassis 16v (Scirocco / Golf / Jetta)	210mm	Sport	70.479
MKIII Chassis 2.0L (Golf / Jetta) 1993-1/94	210mm	Sport	70.479
MKIII Chassis 2.0(Golf / Jetta) 2/1994-98	210mm	Sport	70.481
MKIII Chassis VR6 (GTI / Jetta / Corrado VR6)	228mm	Sport	70.520
MKIV Chassis 1.8T 5-sp (Beetle / GTI / Jetta)	220mm	Power Clutch	70.519
MKIV Chassis VR6 5-sp (GTI / Jetta)	228mm	Sport	70.540
Corrado G60 / Passat 4cyl (1990-97)	228mm	Sport	70.519
Passat B5 1.8T (1998-up)	228mm	Sport	70.549

ABD Racing Race Clutch Packages

These clutch packages are specially made for high performance or on track driving. Listed below are our most popular parts, most applications are available special order.

Application	Description	Part Number
MKIV 1.8T 5-speed	multi puck disc	70.RC10
MKIV 1.8T / VR6 6-Speed	multi puck disc	70.RC20
Passat / Audi A4 1.8T 5-Speed	multi puck disc	70.RC30

Clutch Repair / Upgrade Parts

Clutch Cables

Applications	Part Number
Rabbit / Scirocco / Jetta I	171721335E
Golf / Jetta II	191721335M
Golf / Jetta II (self adjusting)	191721335AB
Golf / Jetta III 4cyl (self adjusting)	1H1721335A



Lightweight Flywheels

We offer only the finest in a lightweight flywheel option. Engineered for the enthusiast who demands the most out of there drive train. This flywheel will allow the engine to reach high RPM levels quicker than the heavy original part. Most of our lightweight flywheels are half the weight of the original.

Application	Description	Part Number
G60 / (1.8T clutch conversion)	228mm	70.LF10
1.8T Golf / Jetta / Beetle 5-sp	228mm	70.LF20
1.8T Golf / Jetta / Beetle 6-sp	228mm	70.LF20

SACHS / ABD Racing 8V/16V Clutch Combo

A very nice alternative to the costly sport clutch packages. By using 16V parts and combined with 8V pieces, we have created a long lasting great performing unit. This is a great clutch for a stock replacement, as well as working great with high performance engines. In fact we use the same pressure plate that comes in this kit in our Drag Race Rabbit Pickup, and that vehicle turns a nice 1.6 second 60 foot time, hard to beat.

Applications	Part Number
All 8V cars w/ 210mm Flywheel	70.816



Clutch Installation Package

We have put together a complete kit of all the necessary parts for a perfect installation of a clutch package. These are all wear parts that are recommended by Volkswagen to replace every time they are removed. Included in the kit is a rear main seal, both the large and small transmission input shaft seals, pressure plate bolts along with new flywheel bolts, and finally the thrust plate with retaining ring.

Applications	Part Number
8 valve / 210mm cars	70.IK1
16 valve cars	70.IK2
4cyl / 228mm cars	70.IK3
VR6 Cars	70.IK4

*Some parts advertised may not be legal for use on public roads.





MOMO Steering Wheels

Momo steering wheels are crafted from only the finest wood, leather function. Along with the outstanding quality of the Momo steering wheel, we offer the Exclusive Momo hub adapter, which is designed with safety in mind as it collapses under impact. Yes, cruising with your hands wrapped around a Momo turns driving into a sheer pleasure.

Description	Size / color	Part Number	Description	Size / Color	Part Number	Description	Size / Color	Part Number
Apache	13.3 / black	APA34BK1B	Fighter	13.8 / Grey	FGT35BK1B	Racing line	13.8 / black	RAC35BK0B
Apache	13.3 / black/blue	APA34BU1B	Jet		JET35BK0B	Team	11.8 / black	TEA30BK0B
Apache	13.3 / black/red	APA34RD1R	(C)Silver Jet		JET35SSLOS	(F)Trek	black	TRK35BK0B
Champion	13.8 / black	CHA35BK0B	Monte Carlo	13.8 / black	MCL35BK1B	Trek	blue	TRK35BK0BU
Commando	13.8 / black/blue	CMD35BK0BU	(D)Millennium	13.8 / black	MIL35BK1P	Trek	red	TRK35BKOR
Commando	13.8 / black/red	CMD35BKOR	Millennium EVO		MEVO35BK1P	Trek	grey	TRK35BKOG
(A)Commando	13.8 / black/grey	CMD35BKOG	(E)Net		NET35BK1B	(G)Tuner		TUN35BK0B
Commando	13.8 / black/yellow	CMD35BK0Y	Race	13.8 / grey	RCE35BK1B			
Competition	13.8 / black	COM35BK1B	Race Metal	13.8 / black & blue spoke	RCM35BK1R			
Corse	13.8 / black	COR35BK1B	Race Metal	13.8 / black & red spoke	RCM35BK1BU			
(B)Driver		DRV35BK0B	Race Metal	13.8 / black & gold spoke	RCM35BK1G			



MOMO Shift Knobs

Again, made of top notch materials, every Momo shift knob is hand sewn and form fitted for a perfect appearance. The qualities of these shift knobs are only imitated but have never been duplicated. A Momo knob will give your crucial shifts up or down an accurate feeling every time for many year's to come.

Description	Color	Part Number	Description	Color	Part Number	Description	Color	Part Number
Aluminum Sport	Aluminum	ALUSP	(H)F-16 EVO		F16EBK1	Shot	Carbon	SHTCBN
(S)Automatico	Aluminum	AUTOALU	F-16 EVO	Silver	F16ESIL	Shot	Silver	SHTSIL
Cobra	Aluminum / Carbon look	COCBN	F-16 EVO	Carbon	F16ECBN	Sphere Air metal	Black lower	SPHBLKAIR
(U)Cobra	Aluminum / Leather	COBK1	F-16 EVO	Red	F16ERED	(G)Sphere Air metal	Silver lower	SPHALUAIR
(I)Combat	Leather / Silver	CTSL	F-16 EVO	Blue	F16EBLU	Sphere		SPHBK1
Combat	Leather / Carbon look	CTCBN	Racesatin	Aluminum	ALURAC	Sphere Aluminum		SPHBK1ALU
(T)Combat EVO		CTESIL	(F)Race Air	Aluminum / Leather	ALUAIR	Sphere aluminum	Red	SPHREDALU
Combat EVO	Air Metal	CTEAIR	Race Air	Black Air Leather	RACAIR	Sphere aluminum	Blue	SPHBLUALU
(W)Combat EVO	Carbon	CTECBN	Race Air	Yellow / Aluminum	RACAYEL	Super Anatomic	Black	SUBK1
(N)Combat EVO	Red	CTERED	Race Air	Red / Aluminum	RACARED	Super Anatomic	Zebrano Wood	SUZBO
(N)Combat EVO	Blue	CTEBLU	Race Air	Blue / Aluminum	RACABLU	Tomahawk		TOMBK1
(A)Combat EVO Kit (boot & knob one piece)		CTEKIT	(D)Race	Carbon look / Aluminum	RACCBN	(C)Tomahawk	Red	TOMRED
(L)Competition	Aluminum	ALUCO	Raptor		RAPBLK	Tomahawk	Blue	TOMBLU
(Q)Crystal	Red	CRYRED	Raptor	Carbon	RAPCBN	Tomahawk	Yellow	TOMYEL
(Q)Crystal	Blue	CRYBLU	(O)Raptor	Red	RAPRED	Anatomic	Black	ALBK1
(Q)Crystal	Grey	CRYGREY	(O)Raptor	Blue	RAPBLU			
(B)F16	Aluminum / Black	F16BK1	(O)Raptor	Yellow	RAPYEL			
			(O)Raptor	Silver	RAPSIL			
			Raptor alcantara	Blue	RAPABLU			
			Raptor alcantara	Red	RAPARED			
			Raptor alcantara	Black	RAPABLK			
			Raptor alcantara	Grey	RAPAGREY			
			Shadow	Carbon Fiber Look	SUBKCA			
			Short Anatomic	Black	ASBK1			





Momo Leather Shift Boots

Momo manufactures their shift boots from thick leather that will out last the original boot by many years. An additional feature is when using with a Momo shift knob, you can attach the boot to the knob and now it one piece.

Description

Elegance
Endurance
Performance
Performance Alcantara

black

(B) SKB/UNI1
SKB/END1
(A) SKB/PER1
SKB/PERA1

blue

SKB/UNI7
SKB/END7
SKB/PER7
SKB/PERA7

grey

(C) SKB/UNI6
(E) SKB/END6
(F) SKB/PER6
SKB/PERA6

red

SKB/UNI3
(D) SKB/END3
SKB/PER3
SKB/PERA3

yellow

SKB/UNI4
SKB/END4
SKB/PER4
SKB/PERA4

Endurance Finishing Ring

Chrome SKB/END/ADP/CR

Black SKB/END/ADP/BK



Parking Brake Handle Covers

Description

Pit Stop

Steel

PSSTE

Air Metal

PSAIR

Aluminum

PSALU

Carbon

PSCBN

Red

PSRED

Yellow

PSVEL

Blue

PSBLU



Momo Pedal Covers

We .

pedal covers perform best with your feet dry, and to avoid any slipping dry your feet before driving.

Description

Superturismo
Superturismo
Tuning Pedal Kit

Material

Aluminum / Rubber Pad
Aluminum
Aluminum / Rubber Pad

Black

(I) TU1111

Blue

(E) SU1115
SU1111

Grey

SU1112

Gold

Yellow

(G) SU1114

Red

(F) SU1113





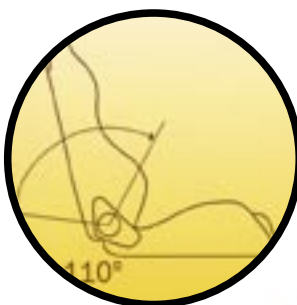
MOMO Sport & Race Seats

Description	Body Colors Available	Shoulder Colors Available	Part Number
Street Racer	Black, Blue, Red, Grey	Grey, Red, Yellow, Black	1018



MOMO Seat Belt/Harness Pads

Description	Black	Blue	Red	Yellow
2" Belt Pads (pair)	R1742BLK	R1702BLU	R1702RED	R1742YEL



Schroth Harnessbelts

Probably the best looking and highest quality safety belts available. Schroth Harnessbelts will definitely keep you in place during those high pressure moments. Hard cornering with tons of side to side movement is no longer an issue once you're strapped in with a set of Schroth belts.

Description / Side	Color	Part Number
--------------------	-------	-------------

Rallye 3 - Three attachment points

Drivers / Left	Black	14100
Passenger / Right	Black	14600
Drivers / Left	Blue	14101
Passenger / Right	Blue	14601
Drivers / Left	Red	14102
Passenger / Right	Red	14602

Rallye 4 - Four attachment points

Drivers / Left	Black	16100
Passenger / Right	Black	16600
Drivers / Left	Blue	16101
Passenger / Right	Blue	16601
Drivers / Left	Red	16102
Passenger / Right	Red	16602



Rallye 3A - Auto-control, three-point harness with an electronically controlled inertia wheel to enable the belt to release and engage while not under any g-force.

Drivers / Left	Black	15100
Passenger / Right	Black	15600
Drivers / Left	Blue	15101
Passenger / Right	Blue	15601
Drivers / Left	Red	15102
Passenger / Right	Red	15602



Schroth Seatbelt Pads

These pads come in matching colors to compliment your Schroth harness's or get wild and use a contrasting combination. These pads also work well with original equipment seat belts (sold as a pair).

Description / Color	Part Number
Pads / Black	0109
Pads / Blue	1109
Pads / Red	2109
Pads / Yellow	3109





TG Aluminum Accessories

We offer a wide variety of genuine aluminum accessories to enhance both the exterior and interior of your vehicle. Below is a list of the parts offered. If you have a question regarding your application please contact our sales staff.

Roof Mount Antenna Replacement Mast

Description

- V.1 Aluminum Antenna Mast w/ Flex Center
- V.2 Aluminum Antenna Mast / Short
- Aluminum Antenna Mast (Black)

Part Number

- TG.1099
- TG.AS801
- TG.1099B



Aluminum Door Pins (sold in pairs)

Application

- Golf/Jetta (1985-98) / Corrado
- Golf/Jetta (1999-up) / Beetle
- Golf/Jetta(1999-up) / Beetle

Description / Style

- 3-Ring Door Pins
- 3-Ring Door Pins
- Grip Door Pins

Part Number

- TG.1017
- TG.1015
- TG.1076



Aluminum Hand Brake Cover

Application

- Beetle

Part Number

- TG.0010

Aluminum Oil Dip Stick Handle

Semi universal part, original dip stick to must be cut off for aluminum piece to fit.

Description

- Most vehicles

Part Number

- TG.1600



Autobahn Designs Roof Mount Antenna

A replica of the factory unit, the T6V antenna is made of high quality black plastic with the same dimensions as the Fuba Betaflex D.

Description

- T6V Roof Mount Antenna
- 6" Extension Cable
- Replacement Mast

Part Number

- 90.172
- 90.EXC
- 90.MAST



Fuba Roof Mount Antennas

The Fuba is the brand that comes as original equipment on Volkswagens, Porches and Audi with roof mount antennas. Being the highest quality antenna manufactured, the Fuba has a built in amplifier for a cleaner reception, a real help during those long drives. Easily installed on any car for an upgraded look in style.

Description

- (A) Fuba Betaflex D
- (B) Fuba Betaflex AM / FM / Cellular Replacement Mast
- (A) Antenna Hole Plug (1982-88 SII / 1985-92 G / JII)
- (B) Antenna Hole Plug (1993-98 G / JIII)

Part Number

- 90.FBD
- 90.FDC
- 90.MAST
- 90.SPL
- 90.3PL



Armor Door Plates

A good definition of Armor doorplates is "cheap insurance". When installed it is virtually impossible for a thief to pry into your car through the door handle, which is the most common and easiest way to break in .

Applications

- Front / All Rabbit / Cabriolet / Scirocco / Jetta I
- Rear / All Rabbit / Cabriolet / Scirocco / Jetta I
- Front / All Golf / Jetta III
- Rear / All Golf / Jetta III

Part Number

- 90.APF
- 90.APR
- 90.AD3
- 90.AD3

Replacement Door Handles

O.E. Quality at a fraction of the dealer price. Sold with or with out key tumbler, all parts listed below are for All Rabbit/Scirocco / Jetta I / Golf / Jetta II.

Description

- Front Left w/ Tumbler
- Front Right w/ Tumbler
- Rear Left

Part Number

- 191837205A
- 191837206A
- 19399205

Description

- Rear Right
- Front Left w/o Tumbler
- Front Right w/o Tumbler

Part Number

- 19399206
- 191.837.207
- 191.837.208



*Some parts advertised may not be legal for use on public roads.



Superior Dash Kits

Superior manufactures the best quality and most complete line of dash kit we have experienced. Each kit is custom made for your year and model of car with a perfect fit every time. Dash kits are available in either Carbon Fiber, Brushed Aluminum or Rich Burl Wood. Specify which when ordering.

Golf/ Jetta III 2.0L (1993-98) Passat 4cyl (1990-97)	861
Golf/ Jetta II (1985-92)	860
Passat B5 1998-up	864
Beetle 1998-up	865
Audi A4 (1996-99)	870
Audi A4 (2000-2001) Manual trans	AUB001
Audi A4 (2000-2001) Auto trans	AUB003
Audi A4 (2000-2001) Quattro / Manual trans	AUB002
Audi A4 (2000-2001) Quattro / Auto trans	AUB004
Audi A4 (2002-up) Manual trans	AUB008
Audi A4 (2002-up) Auto trans	AUB006
Audi A4 (2002-up) Quattro / Manual trans	AUB009
Audi A4 (2002-up) Quattro / Auto trans	AUB007
Audi TT	AUC005
Golf MKIV (1999-up) 2DR	861.99G
Golf MKIV (1999-up) 4DR	861.4.99G
Jetta MKIV (1999-up)	861.99J
Passat (2001-up)	VWC001
Passat (2001-up) Digital climate control	VWC002



Hood Lifts

With this kit installed your hood will lift into the up position in an easy one-step motion, much easier than the annoying hood rod.

Brand	Applications	Part Number
Bonrath	Rabbit / Cabriolet (1975-93) / Jetta MKI	6101.B
Bonrath	Golf / Jetta MKIII (1993-98) / Cabrio (1995-up)	6102B
Bonrath	Passat B3 (1990-94)	6103B
INXX	Rabbit / Cabriolet (1975-93) / Jetta MKI	4000
INXX	Golf / Jetta MKIII (1993-98) / Cabrio (1995-up)	40004
INXX	Corrado	40026



Hella Air-Horn kits

Everyone is sure to hear you coming with a blast of one of these air horns. Made of high impact red plastic, this kit is an easy install as well as a must for safety.

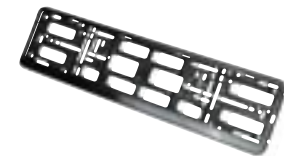
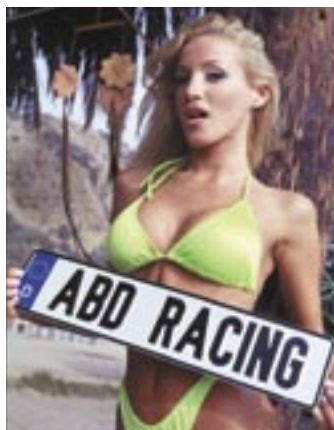
Description	Part Number
Dual Air Horn Kit	90.105
Triple Air Horn Kit	90.100



German License Plates

Choose from Authentic looking random numbers or create your own personalized plate (up to 12 Characters) Add "C" to each part number for a personalized plate

Description:	Part Number
White with Black letters / numbers	90.GPL
White with Black letters / numbers / Red stripe	90.GPL.R
White with Black letters / numbers / Blue stripe	90.GPL.B



European badges

Make your car look like it's European counterpart with the addition of a genuine European Spec badge. We offer badges for the front as well as the rear and in many different applications.

Front grille badges

Description	Part Number
"GTI" Golf (1988-92)	10.853.127
"GTI 16V" Golf (1988-92)	10.853.133
"VR6" Golf (1993-95)	10.853.173
"VR6" Golf (1996-98)	0.853.173
1.8T Rear badge	10.853.104
ABD Rear badge	90.BADGE
ABD Racing stick on colored badges (white, red, silver, chrome)	A.BDG



European Front hood emblem

Beetle 1998 and newer	1CO.853.617
-----------------------	-------------

Replacement Front Grille Emblems

(A) Golf / Jetta II & III (1988-98) (Chrome)	3A0.853.600
(B) Golf / Jetta II & III (1988-98) (Black)	323.853.601



Rear Emblems

Description	Part Number
"Jetta GLI" Jetta (1980-84)	10.853.108
"Scirocco GTI" Scirocco (1975-81)	10.853.109
"Scirocco GTI" Scirocco (1982-88)	10.853.110
"Golf GTI" Cabriolet	10.853.111
"Golf GTI" Golf (1985-92)	10.853.114
"Jetta GTX" Jetta (1985-92)	10.853.124
"Rallye Golf" Beetle	10.853.121
"Vento GT" Jetta (1993-98)	1CO.853.630D
"Vento GT" Golf (1993-98)	10.853.122
"VR6" Corrado	10.853.137
"Vento GLX" Jetta (1993-98)	10.853.139
Munich (Munich)	10.853.172
"Bora" Jetta IV (1999-up)	10.853.115
	10.853.687



*Some parts advertised may not be legal for use on public roads.



Autometer Gauge Pods

For the latest in gauge mounting technology search no further. Autometer offers a very nice and clean looking A-pillar mount gauge pod for either a single 2" gauge or a dual mount as well. In addition the beetle three gauge dash pod blends nicely with its modern interior. Made of vacuum molded plastic, these parts fit perfectly and give an easy unobstructed view of each gauge. This product does not fit cars with A-pillar air bags.

Applications

- Audi A4 (1996-98) Single
- Audi A4 (1996-98) Dual
- Golf / Jetta III (1993-98) Single gauge
- Golf / Jetta III (1993-98) Dual gauge
- Golf / Jetta III (1993-98) Single gauge / Carbon look
- Golf / Jetta III (1993-98) Dual gauge / Carbon look
- Beetle (1998-up) 3-Gauge Dash Pod
- Beetle "Carbon look"
- Golf IV (1999-up) Single 2" Gauge Pod
- Golf IV (1999-up) Dual 2" Gauge Pod
- Jetta IV (1999-up) Single 2" Gauge Pod
- Jetta IV (1999-up) Dual 2" Gauge Pod
- Passat (1998-2001) Single
- Passat (1998-2001) Dual

Part Number

- 20191
- 20190
- 20851
- 20850
- 21851
- 21850
- 20.009
- 21009
- 20.853
- 20.852
- 20.855
- 20.854
- 20847
- 20846



ABD Racing Billet Aluminum Gauge Bezel

Install any 2" gauge with the appearance it was done at the factory. Now at perfect eye level you can monitor engine vitals such as boost level or oil pressure. Our kit includes one billet gauge bezel either anodized black for that original equipment look or to stand out order the silver finish.

(NOTE: must relocate headlight switch)

Application

- Golf/Jetta MKIV (1999-up) / Beetle / Passat (1998-up)



Black
80.G.108

Silver
80.G105



Auto Meter Competition Instruments

Auto meter is a leader in competition instrumentation. We offer a variety of gauges styles, sizes and colors with the most popular listed below. The complete auto meter product line is available from us, if you don't see what your looking for listed please contact your salesperson for availability and pricing.

Cobalt

This is the latest release from Auto meter. The Cobalt series is the closest match to your interior lighting. At night a brilliant blue will illuminate the complete gauge, highlighting the important characters including the needle.

Lunar series

An ever popular silver gauge that looks great in any interior. Once illuminated the face will glow in an outstanding green hue. Perfect for the gauge that needs to stand out like no other.

Ultra-lite series

One of our all time favorites, the ultra light gauge has been a staple with us for many years. Brilliant silver gauge and face the ultra light's illumination can be changed with colored bulb covers.

Z-Series

An all black gauge the z-series will blend nicely into most interiors. The back lit, black face gauge has a timeless design. Illumination can be changed with colored bulb covers.

Description	Part Number	Cobalt	Lunar	Ultra-lite	Z-series
Supercharger Boost (0-35)			4104	4304	2616
Turbo Boost (vac/boost 30/30)	6159	4103		4377	2614
Oil Pressure (0-100)	6153	4127		4321	2634
Oil temperature (140-300)				4348	2639
Water temperature (100-250)	6155	4137		4337	2635
Voltmeter (8-18)		4191		4391	2645

**NOTE: Auto meter gauges include sending units and tubing kits



*Some parts advertised may not be legal for use on public roads.



ABD Racing Silver Gauge Face Replacements

Upgrade the interior of you Golf/Jetta mkiv or Passat 1998–up with our easy to install silver gauge face replacements. These are die cut transparent units manufactured to perfectly fit your year and model of car. Our gauge faces are not cheap decals and will give you a lifetime of great looks with the O.E. fit and finish. (Specify your cluster configuration when ordering, for assistance contact our sales department)

Description	Part Number
Application; Golf / Jetta MKIV (1999–up) / Passat (1998–up)	
ABD Gauge Face Replacement / Auto trans / 8 light	80.G20.1
ABD Gauge Face Replacement / full screen / 8 light	80.G20.2
ABD Gauge Face Replacement / full screen / 6 light	80.G20.3
ABD Gauge Face Replacement / half screen / 8 light	80.G20.4
ABD Gauge Face Replacement / half screen / 6 light	80.G20.5
ABD Gauge Face Replacement / Auto trans / 6 light	80.G20.6



Beetle Gauge Face

After a simple installation, the Beetle interior is even further modernized while equipped with a white gauge face. Brilliant white with the original blue illumination shinning through.

Description	Part Number
Beetle 2.0L White Gauge Face / Manual trans	80.1016B
Beetle 2.0L White Gauge Face / Auto trans	80.1014B
Beetle 2.0L silver gauge face / Manual trans	80.1016S
Beetle 2.0L silver gauge face / Auto trans	80.1014S
Beetle 1.8T White Gauge Face / Manual trans	80.1018TW
Beetle 1.8T White Gauge Face / Auto trans	80.1018AW
Beetle 1.8T Silver Gauge Face / Manual trans	80.1018TS
Beetle 1.8T Silver Gauge Face / Auto trans	80.1018AS



VDO Gauges and Products

When you purchase VDO products you know you're buying top-notch quality. There is a reason all of the high end European Auto makers have used VDO for so many years, reliability and accuracy. VDO has always been at the top of our list during the installation of aftermarket / auxiliary gauges and here we premiere the most popular units along with a couple of different styles. Now we are only listing the most common gauges and applications but we do offer the entire line–up from VDO Instruments.

Cockpit style

Seems like this part has been around forever and still looks as modern as the day it was introduced. Matte black face with bright white characters stand out perfectly while the fire-red pointer does it's job letting you know the vitals.

White Cockpit

Same characteristics as above, the only difference is the faces are in a bright white with the characters screened in black.

Vision Series

The latest in the VDO Line, the Vision is quickly on it's way to becoming our most popular gauge. Black matte face with white characters fit in very nice with any modern vehicle and that brilliant colored pointer stands out perfectly over the numbers. The big difference between the Cockpit and the Vision series is the Vision is a backlit gauge, making each number stand out perfectly. Also an added advantage is with the backlit feature, one can change the color of the lighted background by using a VDO lamp diffuser.

Description	Cockpit	White Cockpit	Vision
*Turbo Boost vac.30 / 0–25lbs	150.061	50.121	
Clock	370.021	370.221	370.152
**Oil Pressure 150 lbs.	350.041	350.240	350.108
**Oil Temperature 300°	310.012	310.106	
**Water Temperature 250°	310.041	310.239	310.105
Voltmeter	332.041	332.241	332.103
*Supercharger boost (0–30)	150.052		150.104

** A Sending unit is required for installation of this product, call for price and availability.

*Tubing kit required for installation

6' Tubing Kit	150.851
16' Tubing Kit	150.855
6' Copper Tubing Kit	150.856



Water Temp Sending Unit Tube

This tube is required on all MKIV cars when installing a water temperature gauge. The upper radiator hose must be cut and the tube is then inserted into place with the sending unit attached.

Description	Part Number
Water Sending Unit Tube	70.TUBE



*Some parts advertised may not be legal for use on public roads.





Colored Bulb Covers

With a simple slip on installation, your instruments/city lights can now have a different appearance.

Bulb Size	Blue	Green	Red
9/32"	600.853B	600.856	600.853
11/32"	600.857B	600.858	600.857
Type D "Peanut"	600.859B	600.860	600.859
Type E & C	600.861B	600.862	600.861

Diamond Cut European Headlights

Same specifications as the above listed European conversions with the added touch of a diamond cut finish.

Application	Part Number
7" Round H4	3611
5-3/4" Round H1	43611



Rabbit / Cabriolet Driving Light Grilles

Gain Brightened lighting plus updated looks with this driving light and Grille combination. Sold in a complete kit including all wiring, relays, bulbs etc...
(Cars with A/C must move condenser 1" to left, simply done by drilling two new mounting holes.)

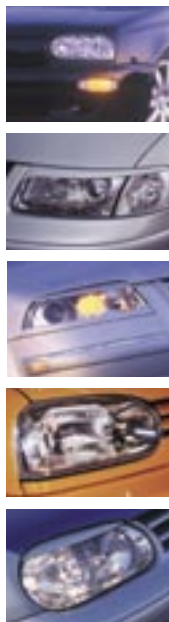
Applications	Part Number
All Rabbits with Round Headlights	01.300



European Lighting

The European Lighting Conversions we offer are genuine Volkswagen replacement parts from the European Spec cars. Some of these kits will require minor engineering to make them fit on a North American Spec car, but don't worry it's easy. Brighten your night vision and increase the safety is the benefits from installing European Headlights.
(not legal for use on public roads)

Applications	Bulb Style	Part Number
Audi A4 (1996-2001)	Projector Beam	3621
Corrado (1990-94)	H4 / H3	01.1020
Corrado V6	H4 / H3	01.1020V
Golf / Jetta II (Aerodynamic Style)	H4	01.1018
GTI (1990-92 w/ Round H/L)	H4	01.1026
Golf III (1993-98) (Standard Golf)	H4	01.1025
Golf III GTI / Cabrio	H1 / H1	01.1024
Golf IV Dual Round	H4 / H1	494811
Golf IV Dual Round	Xenon Lowbeam	494831
Jetta III (1993-98)	H4	01.1023
Jetta IV (1999-up)	H4	56091/56101
Passat (1990-94)	H4	01.1021
Passat (1995-97)	H1 / H1	01.1022
Passat (1998-up)	(HID = High Intensity Discharge)	25.71.10.64



1988-93 Cabriolet Grille Conversion

This conversion is the same grille and headlights used on the 1988-93 Cabriolet. Kit includes grille & driving lights.

Applications	Part Number
All Rabbits / Cabriolet with Round Headlights	01.301



City Light Conversion Kits

Used in Europe throughout as parking lights, these city light kits will add a nice illuminating look as it glows within the headlight unit. Listed below are two different styles, on is a drill in model that can be used on about every headlight with a metal or plastic housing. The other is a clip in style but will only work on headlights with H4 bulbs.

Description	Part Number	Description	Part Number
ABD Racing City Light Kit (Clear)	01.001	H-4 City Light Kit (Clear)	01.H41C
ABD Racing City Light Kit (Blue)	01.001B	H-4 City Light Kit (Blue)	01.H41B
ABD Racing City Light Kit (Green)	01.001G	H-4 City Light Kit (Green)	01.H41G
ABD Racing City Light Kit (Red)	01.001R	H-4 City Light Kit (Red)	01.H41R
ABD Racing City Light Kit (Yellow)	01.001Y	H-4 City Light Kit (Yellow)	01.H41Y

H-4 Replacement Lighting

Hella manufactures these units, made to easily install into stock housings. Available in all the early popular sizes with a wide range of high power bulbs (optional) to brighten up your night life.

Description / Size	Part Number
4"x6" Low / High Beam (H4)	01.146
4"x6" High Beam (H1)	01.116
7"x6" Low / High Beam (H4)	01.206
5-3/4" Round - Low / High Beam (H4)	01.456
5-3/4" Round - High Beam (H1)	01.156
7" Round - Low / High Beam (H4)	01.602



*Some parts advertised may not be legal for use on public roads.



European 16V GTI Round Headlight Conversion

Update the looks of your early car or use as a replacement for your later GTI. This round H/L conversion kit includes grille, headlights, driving lights and radiator support. (minor items such as nut's ,bolts and h/1 plugs not included) (not legal for use on public roads)

Applications	Part Number
Golf / Jetta II (1985-92)	01.1016



Replacement Grille Emblem

Black	323.853.601
Chrome	340.853.600

Optional Grille Spoilers

Golf / Jetta II w/round headlamps (upper)	10.046
Golf / Jetta II w/round headlamps (lower)	10.46L

Passat Dual Round Headlight Conversion

Manufactured by Hella for the best in quality, this dual headlight setup will definitely separate your Passat from the rest of the pack. The early Passats came with about the worst headlight's made, so brighten up your night life with this complete conversion (includes front turn signals).

Description	Part Number
Passat (1990-94) Dual Headlight conversion (clear)	01.1013C
Passat (1990-94) Dual Headlight conversion (smoked)	01.1013B



Dual Round Headlight Conversion for Golf III

We offer three alternatives for this conversion. First is our in-house brand, a very good quality part with all the looks you want and the performance we demand out of a headlight kit, second are two different kits from Hella. First aid the standard conversion with Clear headlights, and the second having a smoke Shroud as well as smoke Headlights Looks great on dark colored cars. Third we offer the ABT conversion. Looks are about the same as the first kit mentioned, the difference being the ABT kit comes with a nicer quality headlamp unit. All parts listed are manufactured for a swap from a European Spec car, requires modification and extra parts for installation on all North American cars. (not legal for use on public roads)

Applications	Part Number
Golf (1993-98)	
Hella Clear Dual H/L kit	01.HELLAC
Hella Smoke Dual H/L kit	01.HELLAS
ABT Dual H/L kit	01.ABTL



(GIII H/L kit's can fit on all Jetta III cars after changing the hood and grille to that of a Golf III)

Golf MKIV Style Headlight Conversion for Golf MKIII

The latest in headlamp fashion and function, the Golf IV (1999-2000) comes with very unique and stylish headlamps. Why not apply these to your 1993-98 Golf III? Very nice light quality with updated looks all in one. This kit should be installed by experienced personnel. Trimming and minor fabrication required.

Description	Part Number
Golf IV STYLE H/L for Golf III (1993-98)	3601

Golf IV Black (Smoke) Headlights

The Golf IV has pieces of art for headlights but it only gets better. Upgrade your car with a set of this Stealth looking Black lamps for the latest in design. Available either with or without foglamp provision, this kit is sure to be a hit.

Application - all 1999 and newer Golf IV. (not legal for use on public roads)

Description	Part Number
Golf IV Smoke H/L W/ Fog lamps	3604
Golf IV Smoke H/L W/O Fog lamps	3603
Golf IV H/L W/ integrated Fog Lamps	3602



Stock Replacement Headlights

Applications	Left Part Number	Right Part Number
Audi A4 (1996-1/99)	8D0.941.029E	8D0.941.030E
Audi A4 (2/1999-2001)	8D0.941.029AQ	8D0.941.030AQ
Audi A4 HID (2/1999-2001)	8D0.941.029AR	8D0.941.030AR
Golf / Jetta II (1985-92)	65024	65025
Golf III (1993-98)	65186	65187
Golf Sport / GTI / Cabrio (1993-98)	65167	65168
Jetta III (1993-98)	65184	65185
Passat (1990-94)	65141	65142
Passat (1995-97)	65541	65542
Passat (1998-2001)	380.941.017Q	380.941.018Q
Passat (1991.5-up)	380.941.015AM	380.941.016AM
Golf w/o Fog (1999-2001)	1J0.941.017B	1J0.941.018B
Golf w/o Fog (2002-up)	1J0.941.017D	1J0.941.018D
Golf w/ Fog (1999-2001)	1J0.941.017C	1J0.941.018C
Golf w/ Fog (2002-up)	1J0.941.017E	1J0.941.018E
Jetta w/o Fog (1999-2001)	1J5.941.017AJ	1J5.941.018AJ
Jetta w/o Fog (2002-up)	1J5.941.017BJ	1J5.941.018BJ
Jetta w/ Fog (1999-2001)	1J5.941.017AH	1J5.941.018AH
Jetta w/ Fog (2002-up)	1J5.941.017BH	1J5.941.018BH



Original Equipment Fog lamps

OEM Parts for a great looking upgrade or use as stock replacement parts.

Applications	Left	Right
Corrado G60	65066	65067
Corrado VR6	65535	65536
Golf / Jetta II (1990-92)	65451	65452 yellow kit 3238 black kit 3038
Golf / Jetta III (1993-98)	65255	65256
Passat (1995-97)	65533	65534



Driving lamp covers

Made of high impact plastic these lamp covers snap into place for a perfect fit.

Application	Clear	Amber
Beetle	01.LENSC	01.LENSA



*Some parts advertised may not be legal for use on public roads.



TailLight Options

As with the rest of your car, one needs to stay up with the Jones' on the lighting aspect as well. Listed below are several different designs and colors of tail lamps we offer. Most of these units will bolt right into your car but some do need simple rewiring of your taillights. An unbelievable difference this addition will make to the appearance of your vehicle, this is the way to stand out from the rest. Listed below is a list of the most popular applications and color choices, call for more information. (most applications offer an optional tail lamp electrical plate, this will make the job easier on certain models, not legal for use on public roads)

Year & Model	Color Options	Part Number
Audi A4 (2002-up)	Silver (clear)	3591
Audi A4 (2002-up)	White / Red	43191
Audi A4 (2002-up)	Smoke	3091

Audi A6 (1998 -up)

Audi A6	Silver (Clear)	3560
Audi A6	Smoke	3060

Rabbit / Cabriolet MKI (1975-92)

Rabbit (1975-80; Cab 1980-93)	Clear	3519
Rabbit (1975-80; Cab 1980-92)	Clear / Red	3119
Rabbit / GTI (US - 1981-84)	Clear	

Golf / Jetta MKII (1985-92) (must use euro backing plate or modify US spec)

Golf / GTI	Blue	3427
Golf / GTI	Clear	3526
Golf / GTI	Green	3327
Golf / GTI	Smoke	3026
Golf / GTI	Red / Clear	3627

Golf / Jetta MKIII (1993-98)

Golf	Red	43126
Golf	Silver (Clear)	43526
Golf	Smoke (Black)	43026
Golf	Green	43326
Golf	Blue	43426
Golf	Red / Smoke (MKIV look)	43226
Jetta	Silver (Clear)	843526
Jetta	Smoke (Black)	843026

Golf / Jetta MKIV (1999-up)

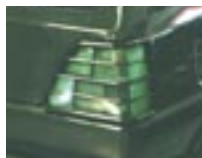
Golf	3D Style - Red / Clear	3130
Golf	3D Style - Green / Clear	3330
Golf	3D Style - Blue / Clear	3430
Golf	Smoke (Black)	3030
Golf	Red	3230
Golf	Silver (Clear)	3530
Golf	Blue	3730
Golf	Green	3830
Jetta	Silver (Clear)	3534
Jetta	Smoke (Black)	3034

Corrado (1990-95)

Corrado	Clear	3647
Corrado	Clear / Red	3147

Beetle (1998-up)

Beetle	Clear (European made)	43510
Beetle	Clear (Taiwan made)	40.3152
Beetle	Carbon look (Taiwan made)	40.3152C



The first thing you notice when a car is coming head on at you might be the headlights. Well then secondly would be the turn signals / Corner markers so why not upgrade these as well. Available in a variety of applications and colors, we listed the best choices for your vehicle.

Model / Year	Color Option	Part Number
Audi A4 (1996-2001)		
Audi A4 (INPRO H.L ONLY)	Crystal Clear	43029
Rabbit / Cabriolet (1975-92 w/ Euro Bumpers only)		
Rabbit	Clear	01.1041
Rabbit	Smoke (Black)	01.1042
Rabbit	Green	3315
Rabbit	Blue	3415
Golf / Jetta MKII (1985-90 w/ Euro Bumper only)		
Golf / Jetta	Clear	01.1041
Golf / Jetta	Smoke (black)	01.1042
Golf / Jetta	Green	3315
Golf / Jetta	Blue	3415

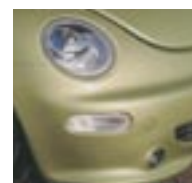
Golf / Jetta MKII (1990-92 Big Bumpers)		
Golf / Jetta	Clear	01.1011
Golf / Jetta	Smoke (Black)	01.1012
Golf / Jetta	Blue	3414
Golf / Jetta	Green	3314
Corrado G60 (1990-92)		
Corrado G60	Clear	01.1022

Scirocco II (1982-88 w/ European H/L only)		
Scirocco II	Amber	01.1033
Scirocco II	Clear	01.7335

Golf / Jetta MKIII (1993-98) - must modify for N.A. Bumpers		
Golf / Jetta w/ fog lamp cover	Smoke (Black)	3065
Golf / Jetta w/o fog lamps	Smoke (Black)	3063
Golf / Jetta w/o fog lamps	Green	3363
Golf / Jetta w/o fog lamps	Blue	3463
Golf / Jetta w/o fog lamps	Crystal Clear	3563

Beetle - All (1998-up)		
Beetle	Clear (Taiwan made)	40.3151.CL
Beetle	Smoke (Black)	3036

Passat (fits Euro H/L. Must modify for US units)		
Passat B3 (1990-94)	Clear	2BA005457801
Passat B4 (1995-97)	Clear	3062
Passat B5 (1998-2001)	Clear	3061
Passat B5 (1998-2001)	Crystal Clear	3561



*Some parts advertised may not be legal for use on public roads.



Side Bumper Indicators

Vehicle	Description / Color	Part Number
Beetle - All (1998–up)	Rear / Clear	40.3150.CC
Golf / Jetta MKIII (1993–98)	Front / Clear	1HM.998.071WHT
Golf / Jetta MKIII (1993–98)	Front / Smoke (Black)	01.1039
Golf / Jetta MKIV (1999–up)	Front / Clear	01.1404
Golf / Jetta MKIV (1999–up)	Front / Crystal Clear	LBVW99G
Golf / Jetta MKIV (1999–up)	Front / Smoke (Black)	LBVW99S



European Side Markers

On some models an original European option, these side markers are an attractive addition to any car. Some years and models already have a provision in the fender for the side marker, which makes the job easy. If there is not a hole in the fender, with the kit is provided a pattern for the installation. (Other colors / sizes available)



Applications	Amber	Blue	Clear	Green	Smoke
Universal / Golf / Jetta II	01.1001	3469	01.1000	3369	3070
Golf/Jetta III Passat (1990–94)	01.1035	3472	01.1037	3372	3072
Golf/Jetta III (on side of bumper)					01.1039
Golf/Jetta IV (1999–up)			3074		
Passat (1995–97) Cabrio (1996–98)			3573		3073
Passat (1998–up)			3074		
Passat B5 (1998–up) Golf / Jetta IV (1999–up)			3574		

Replacement Bulbs

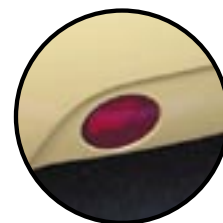
Listed below is both standard wattage as well as high wattage replacement bulbs. It is highly recommended to upgrade your wiring and/or add isolated relays when upgrading the wattage of your headlights. Without this modification you run a risk of burning out your headlight switch. In addition to the usual clear bulb, we offer both blue and ion style bulbs for the finishing touch to your lighting upgrades. The latest additions to our replacement bulbs are the all new Bright White bulbs. This light is the closest thing to achieving the HID style everyone wants.

Description	Wattage	Clear	Bright White
H1	55		01.4102BW
H1	100	01.4103	01.4103BW
H2	55	01.4202	01.4102BW
H2	100	01.4203	01.4103BW
H3	55	01.4302	01.4203BW
H3	100	01.4303	01.4303BW
H4	55/65	01.4402	01.4402BW
H4	55/100	01.4455	01.4455BW
H4	80/100	01.4403	01.4403BW
H7	80/100	01.4703	01.4703BW
9004	55/100	01.9400	01.9400BW
9004	80/100	01.9401	01.9401BW
9005	100	01.9500	01.9501BW
9006	100	01.9600	01.9600BW
9007	80/100	01.9700	01.9700BW



cover for most models. Constructed from a thick clear dense flexible plastic, these units are invisible once installed. A must for cars driven throughout the winter months or in any condition where you might encounter road debris.

Applications	Part Number
Cabrio / GTI (1993–98)	988570
Corrado (1990–94)	740170
Corrado w/ European H/L	982670
Golf / Jetta II (1985–92) Aero H/L	740670
GTI (1990–92)	970080
Jetta III (1993–98)	988270
Beetle	741070
Passat (1990–94)	740970
Passat (1995–97)	740270
Passat (1998–up)	740870
Scirocco II (European H/L)	970970
Golf (1999–up)	
Jetta (1999–up)	



European Fog /Driving light Switches

We offer a switch for almost every model and year of Volkswagen. A nice addition to your Headlight / Driving light upgrade and simple to install. Why use a ugly aftermarket switch when there is a clean original looking alternative.

Applications	Part Number
A1 Chassis cars (German made)/ plug from behind dash	7701
A1 chassis cars (German made)/plug in front of dash	7702
Beetle / Golf / Jetta IV	7788
Corrado (1990–93)	7740
Corrado (1994–95)	7725
Fox	7788
Golf / Jetta II	7711
Golf / Jetta III	7750
Passat (1990–94)	7740
Passat (1995–97)	7741
Passat (1998–up)	7788



European Rear Fog Lamp Lens

A great safety feature for all night driving conditions.

Application	Part Number
Universal (Porsche style)	01.38R
Beetle (left side replaces back up light)	10.941.711

Stonegard Headlight Protectors

In order to protect expensive headlights, Stonegard has created a perfect fitting

*Some parts advertised may not be legal for use on public roads.





Reiger

Additional Rieger compone

Description Part Number

Audi A4 (1996–2001; S4 up to 2002)

Front Spoiler (1996–2.99)	D.00055010
Front Spoiler (1999–2001)	D.00055015
Front Bumper Extension	D.03036000.K
Front RS-4 Bumper Spoiler (1996–2/99)	D.00055025
Front RS-4 Bumper Spoiler (1999–2001)	D.00055028
Side Skirt / Deep Version, Left	D.00055023
Side Skirt / Deep Version, Right	D.00055024
Rear Valance (1996–99)	D.00055030
Rear Valance (1999–2001)	D.00055035
Rear RS-4 Valance (1996–2/99)	D.00055036
Rear RS-4 Valance (1999–2001)	D.00055037
Rear Spoiler (Short Version)	D.00055041
Rear Wing	D.00055040
Rear window Spoiler	D.00055042



Audi A4 (2002–up)

Front RS-4 Bumper Spoiler	D.00055203
Side Skirt, Left	D.00055204
Side Skirt, Right	D.00055205
Rear Valance	D.00055206
Rear Window Spoiler	D.00055242
Rear Wing	D.00055243



Audi TT

Front Spoiler	D.00055101
Side Skirt, Left	D.00055103
Side Skirt, Right	D.00055104
Rear Valance	D.00055105
Golf/ Jetta MKIII (1985–92)	
Front Spoiler R-RS (1990–92 Big Bumper)	D.00048010
Side Skirt, Left - 2 door	D.00048031
Side Skirt, Right - 2 door	D.00048032
Side Skirt, Left - 4 door	D.00048033
Side Skirt, Right - 4 door	D.00048034



Golf / Jetta MKIII (1993–98)

Front Lip Spoiler	D.00042011
Front RS Style Spoiler	D.03007000
Front R-RX Spoiler	D.00042027
Side Skirt, Left	D.00043033
Side Skirt, Right	D.00043034
Rear Valance GTX (golf)	D.00042060



Golf / Jetta MKIV (1999–up)

Front Lip Spoiler / Golf	D.00059001
Front RS4 Bumper Spoiler / Golf	D.300901KER
Front RRX Bumper Spoiler / Golf	D.00059009
Front Spoiler / Jetta	D.00059025
Side Skirt, Left	D.00059030
Side Skirt, Right	D.00059031
Rear Valance / Golf	D.00042061
Rear Valance / Jetta	D.00059040
Rear Roof Spoiler / Golf	C.00059110.J
Rear Wing / Jetta	D.00059045.S
Rear window Spoiler / Jetta	D.00059044



Golf/Jetta MKV (2005-UP)

Golf Front bumper cover	R59302
Jetta Front bumper cover	R592MKV
Side Skirts	R59304.05
Golf Rear valance	R59306
Jetta Rear valance	R594MKV
Golf Rear Wing	R591MKV
Jetta Rear Wing	R595MKV



RIEGER
Tuning



projektzwo

Autobahn Designs now offers proj

Listed below are the some of the most popular kits, call for information on additional products.

Application	Body Kit	Rear Spoiler	Rear Spoiler w/ Brake Light
Golf III (1993-98)	105.21.000.00	105.21.400.00	105.21.410.00
Jetta III (1993-98)	105.21.000.0V		
Golf IV (1999-up)	115.21.000.00	115.21.400.00	
Jetta IV (1999-up)	110.71.000.00	110.71.400.00	

Application	Body Kit	Sport Side Mirrors (pair)
Audi A4 (1996-2001)	124.11.000.00	124.11.290.00

Application	Front Spoiler	Rear balance	lower rear wing	roof spoiler
Audi TT	125.21.100.00	125.21.300.00	125.21.400.00	125.21.401.00

Application	front spoiler	Rear balance	fender flairs	rear spoiler
Beetle	109.61.100.00	109.61.300.00	109.61.600.00	109.61.400.00

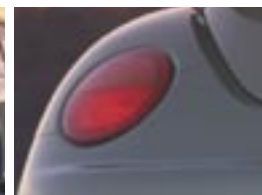
Application	Body Kit (ft. spoiler/side/skirts rear valence)	Rear Spoiler (sedan)	Rear Spoiler (wagon)	Sport Side Mirrors (pair)
Audi A4 (2002-up)	128.51.000.00	128.51.400.00	128.51.401.00	124.11.290.00



V1 Beetle Accessories by Bernt

Bernt offers hand crafted aerodynamic parts for your beetle to give i are most popular items call for full product list.

Application	Description	Part Number
Beetle	V1 Wide Body Kit (includes Front & Rear Bumper Front & Rear Fenders, Exhaust System and Grille (optional Cup Style Front Bumper now available)	CBB1998.0
Beetle	Rear Wing	CBB198.9A
Beetle	Double Rear Wing	CBB198.9B
Beetle	Air Induction Hood	CBB198.17
Beetle	Hood Cowl	CBB198.24



*Some parts advertised may not be legal for use on public roads.



Caractere

Application Description Part Number



Audi TT Full Body Kit w/ Single Exhaust Tip 400.165S
 Full Body Kit w/ Dual Exhaust Tip 4001652S



Audi A4 (1996–2001) Front Bumper Spoiler w/o Fog Lamps 100.110
 Front Bumper Spoiler w/ Fog Lamps 100110AB
 Side Skirts (pair) 107.150
 Rear Valance (Euro) 100.125
 Rear Wing w/ Brake Light 100.141
 RS Style Front Grille 100.130



Audi A4 (2001–up) Front Bumper Spoiler 120.110AB
 Side Skirts (pair) 120.150
 Rear Valance 120.125
 Rear Sport Wing w/ Brake Light 120.141
 Rear Classic Wing 120.140
 Rear Window Spoiler 120.145



Jetta MKIV (1999–up) Front Spoiler (must trim O.E. bumper) 210.115
 Side skirts 110.150
 Rear Valance 210.125
 Rear Hatch Wing 210.141
 Rear Window Spoiler 210.145
 Front "RS" Grille 210.130



Application Description Part Number

Beetle Front Spoiler (must trim O.E. part) w/ Fog Lamps 700.115.AB
 Front Spoiler (must trim O.E. part) w/o Fog Lamps 700.115
 Rear Side Sill Enhancers 700.155
 Rear Valance (w/ Center Exit Exhaust) 700.125.E
 Rear Valance (w/ Tip only) 700.125.S
 Rear Hatch Wing w/ Brake Light 700.141
 Rear Roof Spoiler (2.0L only) 700.145



Golf MKIV (1999–up) Front Spoiler (must trim U.E. bumper) 110.115
 Side Skirts 110.150
 Rear Valance 110.125
 Rear Hatch Spoiler (Classic) 110.140.C
 Rear Hatch Spoiler (Sport) 110.140.S
 Rear Hatch Fill (Lower) 110.14
 Front "RS" Grille 110.130



Golf MKV (2005-UP) Front Bumper spoiler 37.210
 Side Skirts 37.216
 Rear Valance 37.211
 Rear spoiler 1pc 37.213
 Rear spoiler 3-pc 37.214
 Rear hatch blend 37.215
 Sport grille 37.212

*Some parts advertised may not be legal for use on public roads.



European Bumpers

By bolting on these European bumpers, an approx. 50lbs of weight saving along with much improved looks are to be gained. European bumpers are designed to fit much tighter and closer to the body of your car therefore closing any ugly gaps the bulky U.S. Spec bumpers allow. (Non-absorbing, for off road use only)

Applications	Front	Rear
Golf II (1985-90)	90.191.103	90.191.301
Golf III (1993-98)	90.357.103	90.357.301
Golf IV	90.53300	90.53350
Jetta I (1980-84)	90.161.101	90.161.301
Jetta II (1985-90)	90.191.103	90.165.301
Rabbit / Cabriolet (1975-87)	90.171.103	90.171.301
Scirocco II (1982-88)	90.533.101	90.533.301



ABD Racing Beetle Cup Style Front Bumper Spoiler

Designed by and manufactured exclusively for Autobahn Designs/ABD Racing. Made from flexible polyurethane, this replica of the Beetle cup car installs as a replacement for the front bumper cap. Included in the kit is a powder coated mesh for road debris protection as well as giving the front the race look of the famed Cup race car.

Application	Part Number
Beetle (1998-up)	10.BC10
Additional parts to complete the Beetle Cup look	
ATS Right Side Skirt	C19VB46
ATS Left Side Skirt	C19VB45
ATS Rear Apron	C19VB44
ATS Rear Spoiler	C19VB42



O.E. European Front Bumper Strip

Application	Part Number
Jetta IV (1999-up)	500.100.700



Autobahn Designs Aerodynamic Packages

Here at Autobahn Designs we pride ourselves on the current line of aerodynamic packages. All of our kits are constructed from the highest quality hand lamination process available, to produce a smooth easily sandable finish. As with any aerodynamic package, allow several hours of fitting time per kit, but if done patiently the results will be worth the effort.

Applications	Part Number
Rabbit/Cabriolet (1975-87) (Front Spoiler, Side Skirts, Fender Flares)	10.101
Optional Rear Valance	10.R01
Golf/GTI (1985-89) (Front Spoiler, Side Skirts, Rear Valance)	10.102
Driving Light Kit / Hella 450	01.106
Jetta II (1985-89) (Front Spoiler, Side Skirts, Rear Valance)	10.102J
Driving Light Kit / Hella 450	01.106
Golf / Jetta II (1990-92)	10.102L
Corrado G60 (must modify to fit VR6)	10.104
Scirocco II (1982-88) (with US bumpers)	10.103



1990-92 Style Golf / GTI Bumper Upgrade

update the looks of your 1985-89 Golf / GTI with our bumper upgrade. Bumpers include bumper cover as well as the reinforcement. (non absorbing - off road use only)

Description	Front w/ Fog Lamp Holes	Front w/o Fog Lamp Holes	Rear
Bumpers (1990-92) Style	191.807.103G	191.807.103F	191.807.301F

Optional parts to complete conversion

Description	Clear	Smoke
Front Turn Signals (1990-92) (other colors available)	01.1011	01.1012
ABD Racing Lower Front Spoiler	Part # 10.L2F	

Autobahn Designs Front Spoilers

These are the same front spoilers featured with our Aerodynamic Packages.

Applications	Part Number
Rabbit / Cabriolet / Jetta I (must use O.E. flares or with ABD body kit)	10.11F
Golf / Jetta II (1985-89)	10.12F
Golf / Jetta II (1990-92)	10.12F
Corrado G60 (modify to fit VR6)	10.14F
Scirocco II	10.13F



O.E. VR6 front chin spoiler

Can be installed on Golf / Jetta 1990-92 with big bumpers. Must modify.

Application	Part Number
Golf / Jetta III(1993-98)	43528/9



*Some parts advertised may not be legal for use on public roads.



Zender

The design crew at Zender is one of the best in the world of aftermarket automobile styling components. We have offered this product line for many years, and while other name brands come and go, Zender is one that is here to stay. All of the parts offered fit like a personalized glove and are usually extremely easy to install. Most parts are made of either polyurethane, ABS Plastic, or on some limited production units we will even find fiberglass, but still remaining the best quality available.

Applications

Part Number



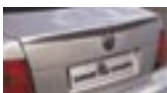
Golf / Jetta III (1993-98) - Limited Quantities

Front Spoiler	805.4.710
Challenge Front Bumper Cover	4.743.02.3
Softline Front Bumper Cover	4.725.02.3
Side Skirts (except Cabrio)	4.713.01.3
Softline Rear Bumper Cover	4.739.04.3
Rear Wing w/ Brake Light	4.727.03.3



Golf IV (1999-up)

Front Bumper Cover	4.663.02.3
Front Spoiler (fits Euro Bumper)	4.627.02.3
Side Skirts	4.665.01.3
Rear Apron	4.664.04.3
Rear Spoiler	4.661.03.3
Rear Wing	4.671.03.3



Jetta IV (1999-up)

Front Bumper Cover w/ Integrated Grill	4.087.02.3
Side Skirts	4.665.01.3
Rear Apron	4.086.04.3
Rear Spoiler	4.085.03.3



Passat

Front Spoiler (1990-94)	4.516.02.3
Side Skirts (1990-94)	4.511.01.3
Sedan Rear Wing (1990-94)	4.514.03.3
Wagon Rear Wing w/ Brake Light (1990-97)	4.622.03.3
Front Spoiler (1995-97)	4.509.02.3
Front Spoiler (1998-up)	4.561.02.3
Sedan Rear Spoiler 3-piece (1998-up)	4.560.03.3
Wagon Rear Spoiler (1998-up)	4.526.03.3
Rear Bumper Exhaust Trim (1998-up)	4.643.13.2

Kamei/Freedom Design

Long associated with aerodynamic components and still to this day one of the top designs used, Kamei / Freedom design products are manufactured from the highest quality plastics and composites used. Fitting is never an issue as these components fit like each part was molded for your car. Kamei was one of the originators in Volkswagen Aerodynamics back in the later 1970's. Although the designs of the past aren't used anymore, some new styles have taken over with some very outstanding results.

Application / description

Part Number

Grille Spoilers

Rabbit W/round headlamps	44047
Cabriolet (1988-93)	44048
Golf / Jetta II (1985-92) Aero Headlamps	44045
Golf / Jetta II (1985-92) Round Headlamps	44046
Golf / Jetta II (1985-92) Round Headlamps - Lower grille cover	44049
Golf III (1993-98)	44040
Corrado	44075
Scirocco II w/ Euro Headlamps	44085
Passat (1995-97)	44062

Sport Grilles

Golf III (1993-98) - Grille cover	44044
Golf III (1993-98) - Sport Grille	44160
Golf IV (1999-up) - Sport Grille Silver	44163
Golf IV (1999-up) - Sport Grille Black	44162
Passat (1995-97) - Sport Grille	44190
Passat (1998-up) - Sport Grille	44192
Passat B5.5 - Sport Grille	44193
Audi A4 (1996-up)	44180
Audi A6 (1998-up)	44184

Bumper Air Intakes

Golf / Jetta III (1993-98)	44036
----------------------------	-------

Headlight Lids

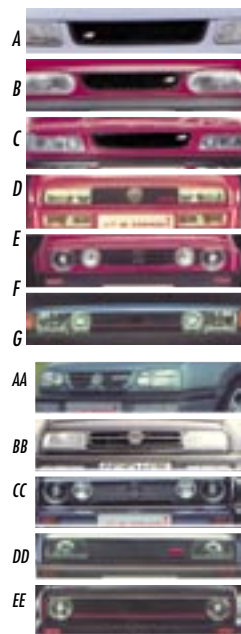
Beetle (1998-up) Carbon look	44026
Beetle (1998-up) Silver	44029
Beetle (1998-up) Chrome	44027
Golf III (1993-98) - H/L Mask Dual look	44039
Golf III (1993-98) - H/L Lids	44043
Jetta III (1993-98) - H/L Lids	44038
Passat (1995-97) - H/L Lids	44135
Golf IV (1999-up) - H/L Lids w/TS Cutout	44034
Golf IV (1999-up) - H/L Lids	44031
Golf IV (1999-up) - H/L Lids w/ Cutout	44035
Passat B5 (1998-up)	44136
Passat B5 (1998-up) Long Version	44137
Passat B5.5 - Upper H/L Lids	44131
Passat B5.5 - Lower H/L Trim	44039
Jetta IV (1999-up)	44014
Audi A4 (1996-up)	44120
Audi A4 (1996-up) Long Version	44122
Audi A6 (1998-up)	44124

Rear Wings / Spoilers

Golf II (1985-92)	44405
Golf III (1993-98)	42092
Jetta III (1993-98) GLX Style	44410
Jetta III (1993-98)	44408
Jetta IV (1999-up)	44412
Cabrio (1994-99)	44449
Corrado	44406
Beetle	44404
Golf IV (1999-up)	44408



7





ABD Racing Full Bumper R32 Body Kit for Golf/Jetta MKIV (99-up)

ABD Racing is proud to introduce a full bumper body kit for the new Golf/Jetta MKIV vehicle. This full package will be available to the public soon. Make your existing Golf look like the R32 with this flexible polyurethane replacement conversion. Kit includes a front bumper spoiler, side skirts and rear bumper. Available in single and dual exhaust applications.

- R32 Body kit**
Golf/ GTI MKIV (1999-2005)
 Complete body kit 10.R32KG
 Front spoiler 10.R32FSG
 Side skirt left 10.R32SSLG
 Side skirt right 10.R32SSRG
 Rear bumper cover 10.R32RVG



- Jetta MkIV (1999-2005)**
 Complete body kit 10.R32KJ
 Front spoiler 10.R32FSJ
 Side skirt left 10.R32SSLJ
 Side skirt right 10.R32SSRJ
 Rear bumper cover 10.R32RVJ



Wings West Body Styling

All Wings West parts can be ordered and painted to match your body color, just supply us with the color code from the manufacturer (painting at an additional cost). Aerodynamic Packages include front spoiler, side skirts and a rear valance;

Applications	Part Number
Golf III (1993-98)	890143
Golf IV	
Jetta III (1993-98)	890109
Jetta III (1993-98) w/ DTM Style front spoiler	890224
Beetle (1998-up)	890287

Front Spoilers

Golf / Jetta III (1993-98)	890108
Golf / Jetta III (1993-98) DTM Style front spoiler	890221
Beetle (1998-up)	890286

Rear Spoiler / Wings

Golf III (1993-98)	591294
Jetta III (1993-98) M3 style 4"	591012
Jetta III (1993-98) GLX Style	591259
Jetta III (1993-98) Super Touring	591349
Passat (1998-up)	960008L
Beetle (1998-up) 3-piece	890283



ABD Racing Sport Grilles

ABD Racing is proud to introduce our DTM Style grille replacement for the Jetta IV as well as our ever popular grille for the Jetta III. These parts easily mount into the factory mounting locations for an easy installation. The large opening up front assures improved cooling in addition to great looks, both important factors during those high speed assaults. Expanded aluminum mesh gives the grille an extra kick in the race look direction as well as genuinely protecting vital components from harsh asphalt predators.

Applications	Part Number
1993-98 Jetta III	01.1000
1993-98 Jetta III Badgeless	01.1000B
New Passat (2001-up)	10.2000
Jetta IV (1999-up)	10.3000
Golf/Jetta V (2005-up)	10.5000



Bonrath Badgeless Grilles

Bonrath has been producing performance accessories for Volkswagen for many years. The fit and finish of their replacement grilles is unsurpassed, not to forget they look darn nice as well. Made of high impact black plastic, this unit resembles the GTI grille with the difference being that the Bonrath part is one piece and does not have an emblem in the center.

Applications	Part Number
Golf / Jetta II (1985-92) Single round H/L	7071
Golf III (1993-98)	7070S
Golf III w/ grille spoiler	7070GS



Autobahn
DESIGNS
INC.



HIGHLINE DIVISION



we are proud to offer the following manufacturers;

AC Schnitzer - BMW

AMG - Mercedes Benz

BRABUS - Mercedes Benz

Carlsson - Mercedes Benz

Lorinser - Mercedes Benz

Racing Dynamics - BMW

Techart - Porsche



TERMS AND CONDITIONS

PLACING AN ORDER

Orders can be placed either over the phone by using a VISA/MASTERCARD or by mail. Any credit card order over \$400.00 will be subject to being held for security for two extra days. All mail orders placed via money order or cashiers check will be shipped immediately. Customers are urged to call ahead for a shipping quote. If sending a mail order please print clearly the return address, both day and evening phone numbers, and the year, make and model of your car. Back orders will be shipped as soon as possible. If the items are on back order for more than a few days we will contact the customer. All personal checks sent will require a minimum of 14 DAYS to clear our bank.

DISCLAIMER

Autobahn Designs offers certain European and rare parts. These parts mentioned may not be legal for on road use and installation of these parts will make your car illegal to operate on public roads. All high performance/European parts come with no warranty against manufacturing or function. At the time of the order an agreement is made not to hold Autobahn Designs as a company or any of its employees liable for any circumstance or costs that may arise from using any of these parts. All high performance/European parts are strictly sold AS IS with Autobahn Designs holding no responsibility. If you're unsure about these products legality, check with your local and state laws.

PRICES ARE SUBJECT TO CHANGE WITHOUT NOTICE!

G E R M A N T U N I N G A M E R I C A N P R I D E

SHIPPING

We ship UPS daily. At additional cost we do offer UPS 2nd day and next day air shipping. Refer to shipping chart for charges or call for a quote. All shipping must be prepaid.

GUARANTEES

All products carry their own manufacturers warranties (where applicable). All Autobahn Designs/ABD Racing products carry a full lifetime guarantee against manufacturers defects excluding cross-drilled rotors which are sold AS IS. Certain other high performance parts are sold AS IS, check with a salesperson at the time of your order.

RETURNS

Returns will only be accepted if we're notified within 7 days from the time the merchandise was received. Returns will only be accepted by calling ahead for authorization. All returns are subject to a 20% handling charge. Incorrect items will be replaced as soon as possible. Please notify us of the problem and ship the wrong parts back immediately.

All return items must be in original packaging and in new, saleable condition. All return items must be sent back via customer, excluding incorrect items in which case we will send a "CALL TAG" to pick up these items.

Special orders, European spec parts and electrical components are non-returnable. Even though a product is featured in our catalog but is not normally carried in stock will constitute this item to be a special order and therefore considered a special order and is non-returnable.

Test fit all parts. Not responsible for labor.

SALES TAX

All California residents are subject to the current percentage of sales tax charged in Riverside, California at the time of the order.

Only California dealers with a state resale card on file will be exempt from sales tax.

***IF THERE ARE ANY FURTHER QUESTIONS REGARDING OUR TERMS AND POLICIES OR ABOUT ANY PRODUCTS PLEASE FEEL FREE TO CALL.

**THANK YOU FOR CHOOSING
AUTOBAHN DESIGNS/
ABD RACING**

2900 Adams Street, Suite B-27 • Riverside, CA 92504

**951-351-9566
FAX 951-351-9575**



www.abdracing.com

